

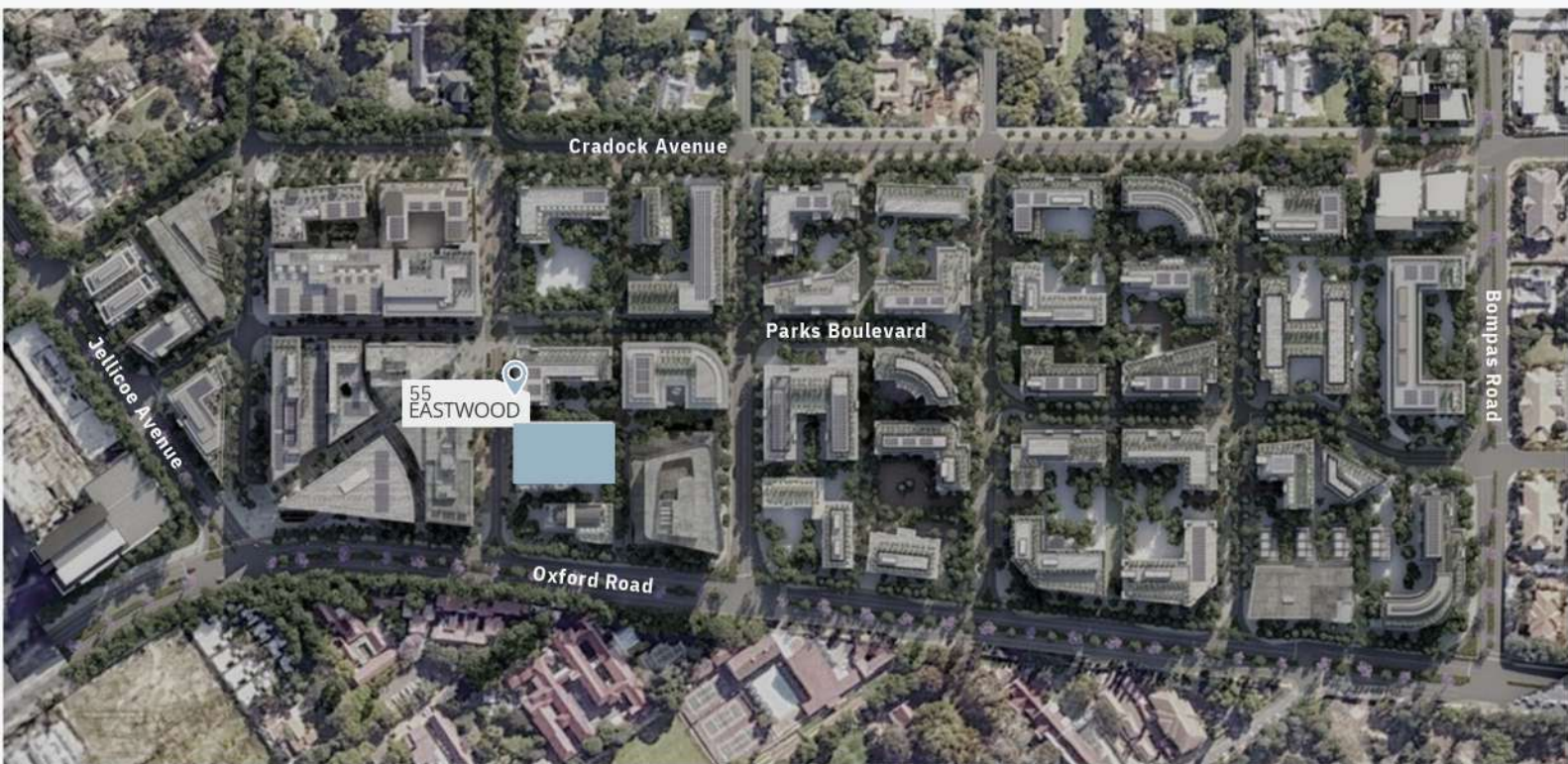
TO LET

55 EASTWOOD

5,800m² Development Site
Occupation: 1 September 2025



Limited Space
Available



55 Eastwood is iconically positioned along the ridge of Oxford Road and building location could no be more prestigious with signage exposure along both Parks Boulevard and Oxford Road. Situated within Oxford Parks which is a sustainable and cosmopolitan medium-density urban environment that will bring 300,000m² of mixed use development rights to this prominent area linking Illovo to Rosebank along Oxford Road in Johannesburg.

55 EASTWOOD RENTAL

 Net Rental Rate R/m ² / Month (Starting From)	TBA
 Balcony Rental Rate R/m ² /Month (Starting From)	TBA
 Operating Cost Rate R/m ² / Month (Estimated – will revert to actuals)	TBA
 Rates Rate R/m ² / Month (Estimated – will revert to actuals)	TBA
 Parking Bays	TBA
 Parking Rental Rate R/Bay/Month	TBA
 Tenant Fit-out Contribution Allowance Rate (R/m ²)	TBA

*All pricing is exclusive of VAT / Subject to Terms and Conditions



Premium Grade
Targeting 6 Star GreenStar Rating and
Carbon Net Zero



Proudly Developed by:

INTAPROP
PROPERTY DEVELOPMENT
AND INVESTMENT