

8 PARKS BOULEVARD

OXFORD
PARKS





CONTENTS

- INTRODUCTION
- PERFECTLY LOCATED
- WELL CONNECTED
- PRECINCT CONCEPT
- ESG PRINCIPLES
- 8 PARKS BOULEVARD DEVELOPMENT
- BUILDING IMAGES
- FLOOR PLANS
- AREA SCHEDULE
- COMPLETED & CURRENT DEVELOPMENTS
- CURRENT TENANTS
- PRECINCT AMENITIES
- CONTACT

OXFORD PARKS

OXFORD PARKS, AN EXTENSION OF THE ESTABLISHED MATURE ROSEBANK NODE, IS A **VIBRANT MIXED-USE PRECINCT** COMPRISING OFFICES, BESPOKE RETAIL AND AN ARRAY OF RESIDENTIAL DEVELOPMENTS AND HOTELS. THE EMPHASIS IS ON A **HIGH QUALITY PUBLIC ENVIRONMENT**, PAIRED WITH PEDESTRIAN LEVEL RETAIL ACTIVITY WHICH ALLOWS OXFORD PARKS TO EMBODY A **DYNAMIC HIGH-STREET CULTURE**. GENEROUS SETBACKS FORM WIDE **LANDSCAPED** PAVEMENTS ACCOMMODATING PEDESTRIAN **PATHS, CYCLE LANES, PIAZZAS & LINEAR PARKS**. THESE LANDSCAPED AREAS PROMOTE THE USE OF THE PUBLIC REALM & PROVIDE SPACES FOR **ART & ENTERTAINMENT LED INSTALLATIONS** & ACTIVITIES. OXFORD PARKS FOCUSES ON THE DEVELOPMENT OF STATE OF THE ART, EFFICIENT, **GREEN STAR RATED** BUILDINGS AS WELL AS PUBLIC AREAS. OXFORD PARKS, BEING A **PRIVATELY MANAGED** PRECINCT, WILL FACILITATE THE SECURITY, LANDSCAPING & SERVICE DELIVERY TO PUBLIC AREAS ENSURING SEAMLESS OPERATIONS WITHIN THE PRECINCT. OXFORD PARKS, COMPLIMENTED BY **ESTABLISHED & COSMOPOLITAN ROSEBANK** IS FAST SECURING ITS IDENTITY IN THE CITY. OXFORD PARKS TRULY EXEMPLIFIES THE CONNECTIVITY OF **BUSINESS, LIFE & LEISURE**.



meier



8

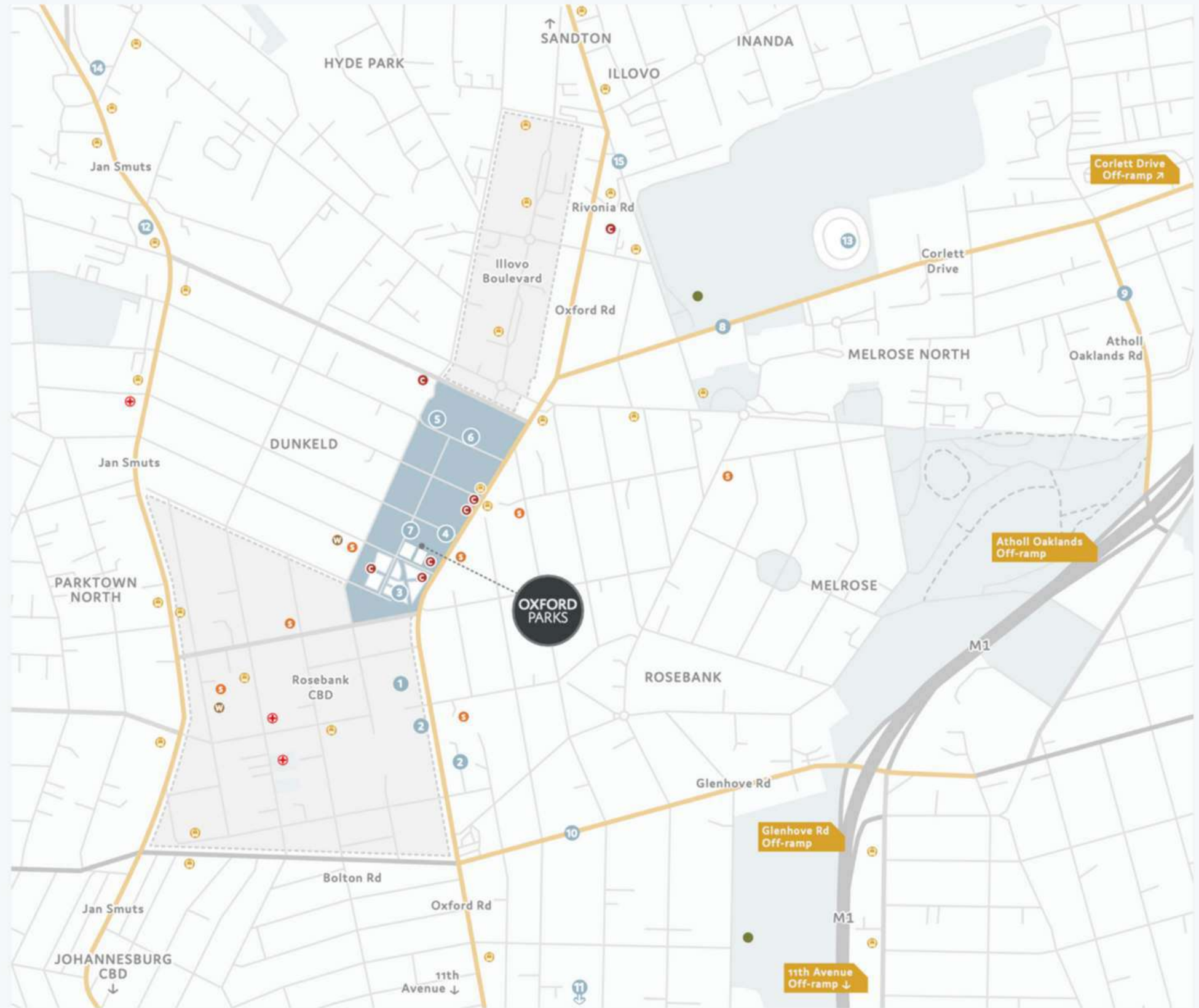
8

PERFECTLY LOCATED

Points of interest:

- 4 Highway access points
- High intersection density and smaller more efficient grids
- Proximity to Rosebank Gautrain station and bus system
- Variety of excellent public transport
- Walk-ability
- Road and infrastructure upgrades
- Engineering services agreement
- New Parks Boulevard

- | | | |
|---------------------------------|---------------------------------|-------------------|
| Oxford Parks Precinct | Illovo Boulevard & Rosebank CBD | Green Belts |
| Gautrain Bus Stops | Golf Courses | Places of Worship |
| Schools | Hospitals | |
| Commercial Offices | | |
| 1 Rosebank Retail | 9 Athol Oaklands Road | |
| 2 Rosebank Gautrain station | 10 Glenhove Road | |
| 3 Radisson RED | 11 11th Avenue | |
| 4 Planned Commercial HQ | 12 Dunkeld West Shopping Centre | |
| 5 The Village | 13 Wanderers Stadium | |
| 6 Villoresi Office Park | 14 Hyde Park Shopping Centre | |
| 7 Planned express grocery store | 15 Thrupps Illovo Centre | |
| 8 Corlett Drive | | |





PARKING

ENTRANCE 2

Transitions



WELL CONNECTED

The Oxford Parks precinct is an energetic and responsive urban destination designed to facilitate a seamless connection between life, leisure and business. The primary choice to locate and invest; a place where people succeed and enjoy life.

- GAUTRAIN STATION**
This station links Rosebank and surrounds to Soweto, Pretoria and OR Tambo

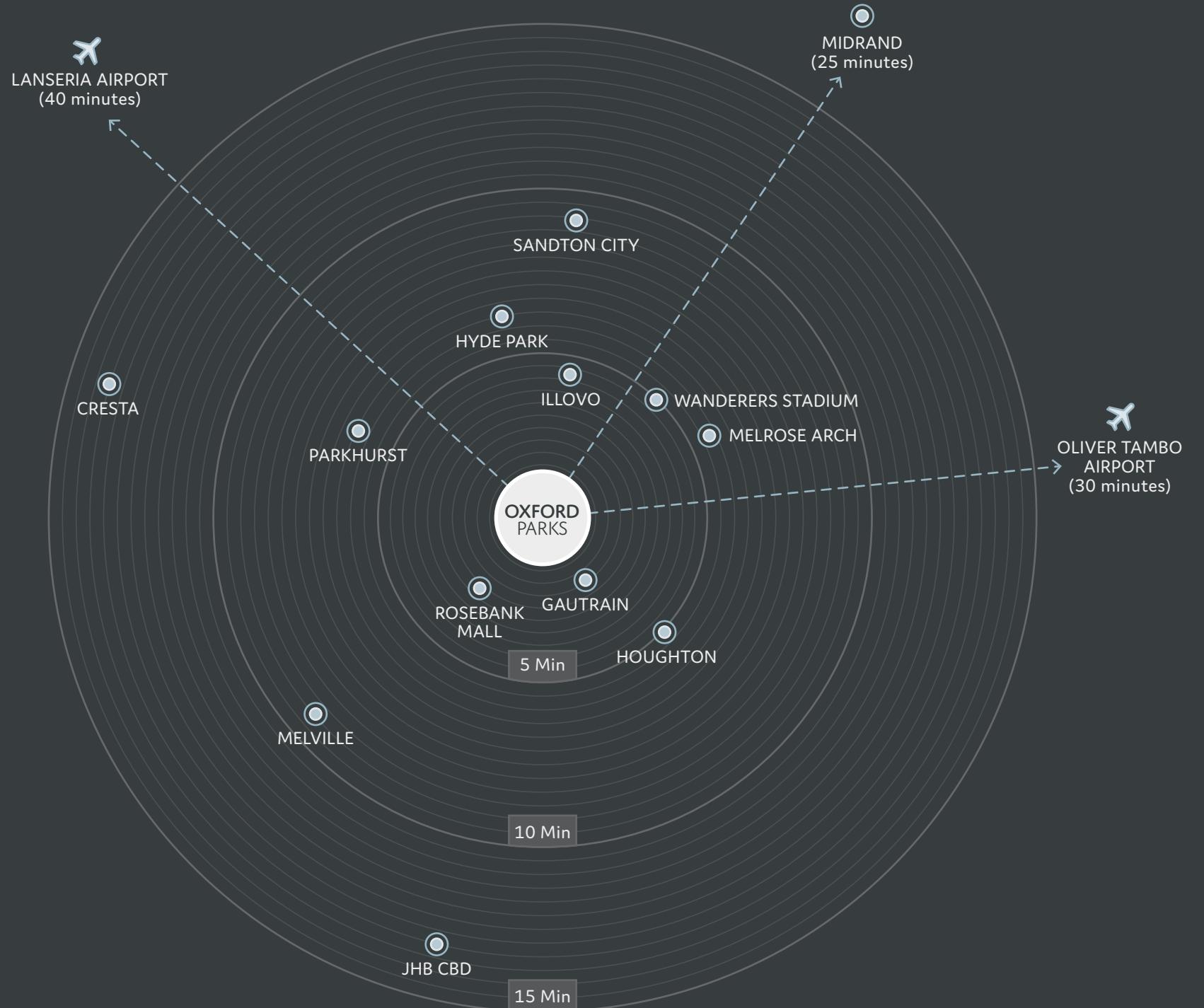
5 Minutes
- ROSEBANK RETAIL**
Houses over 200 shops and restaurants

5 Minutes
- ILLOVO**
A well established residential area and a growing office node

5 Minutes
- SANDTON CITY**
One of the largest shopping malls in Africa

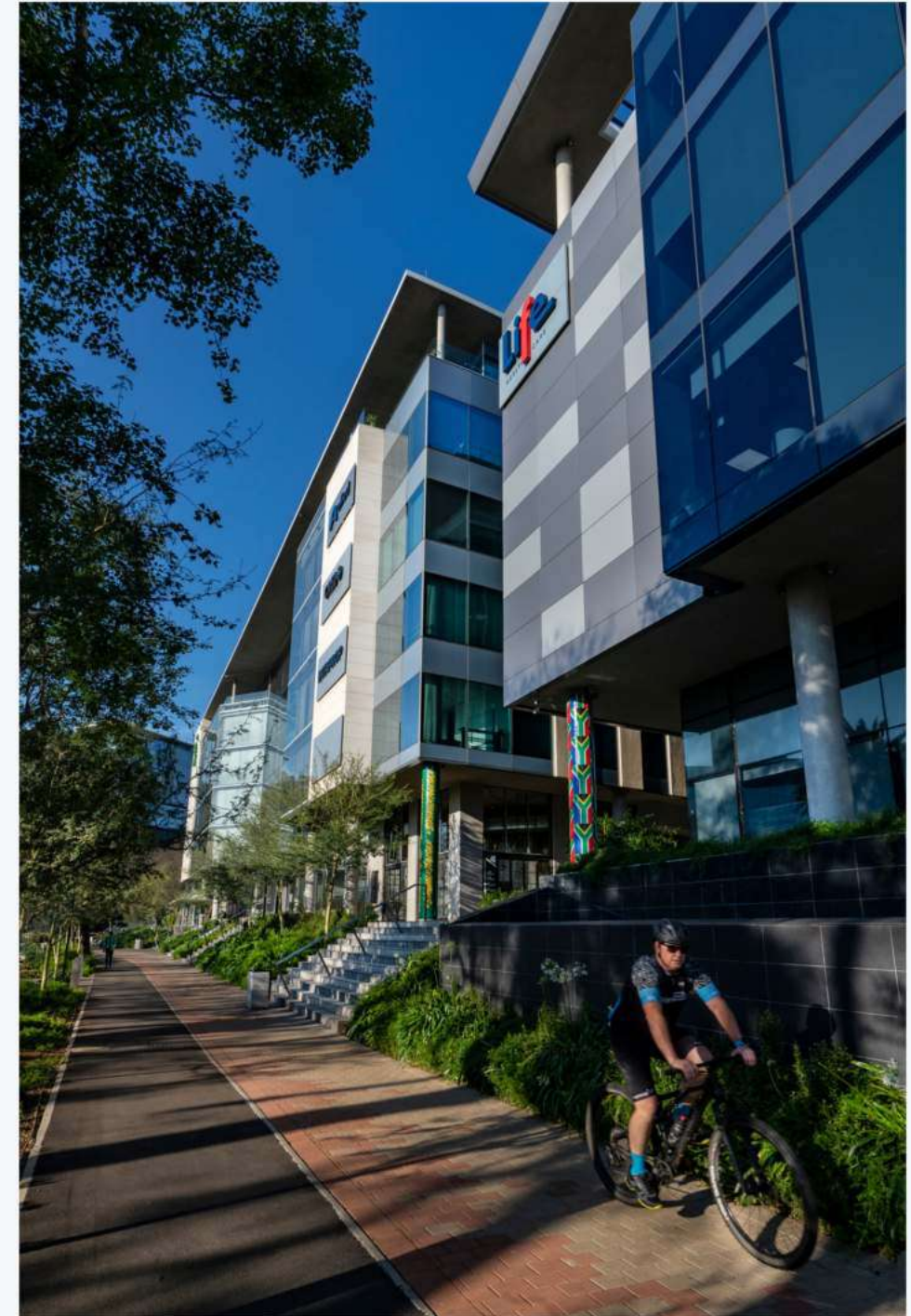
9 Minutes
- OLIVER TAMBO AIRPORT**
International airport

30 Minutes

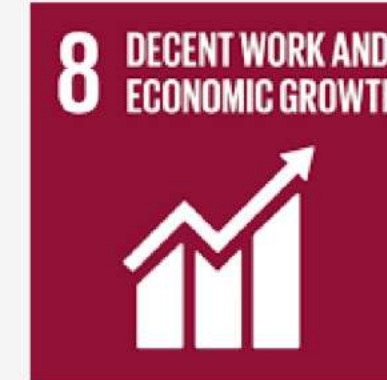


PRECINCT CONCEPT

- Mixed-use precinct
- Extension of Rosebank
- Established mature node
- Epicenter of Johannesburg
- Privately managed precinct
- Precinct management of security, cleaning and public services
- Lifestyle focused
- Precinct convenience & bespoke retail
- Retail service-related amenities
- Human scale development
- Dynamic high-street culture
- Tree-lined piazzas and linear parks
- Pedestrian focused public environment
- Cycle lanes
- Connectivity



ESG PRINCIPLES







Cradock Avenue

8 PARKS
BOULEVARD

Parks Boulevard

Oxford Road

Jellicoe Avenue

Bompas Road





metier

GD

8



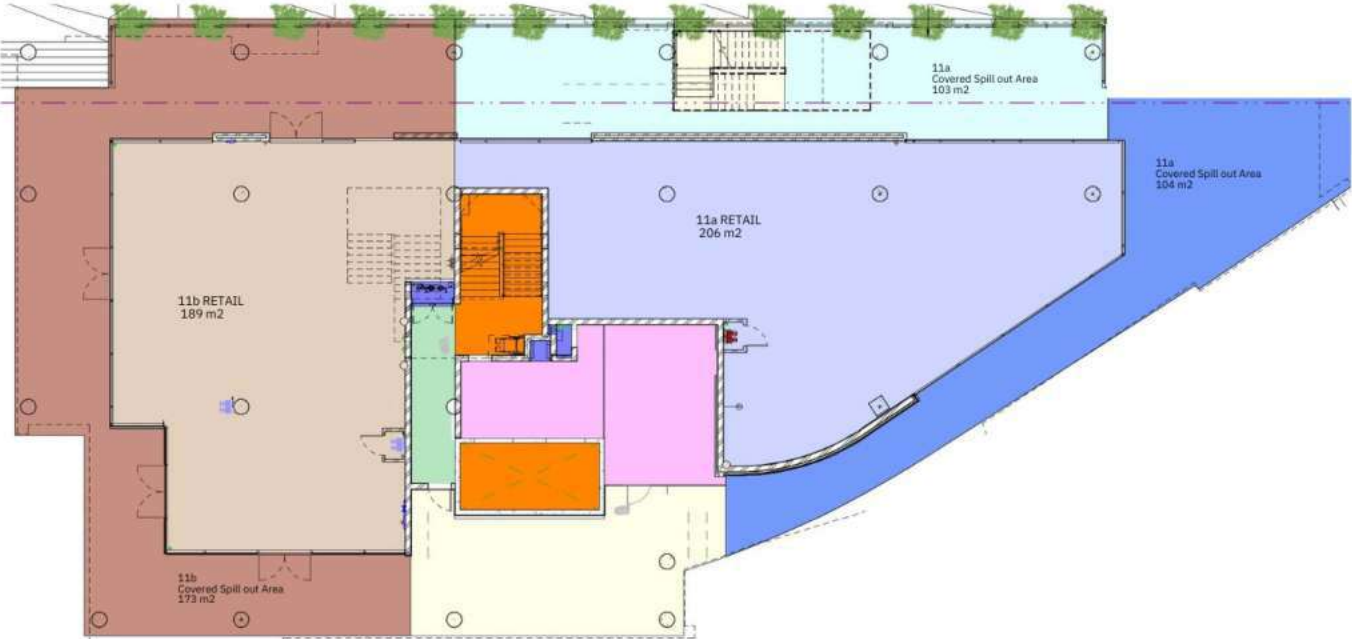






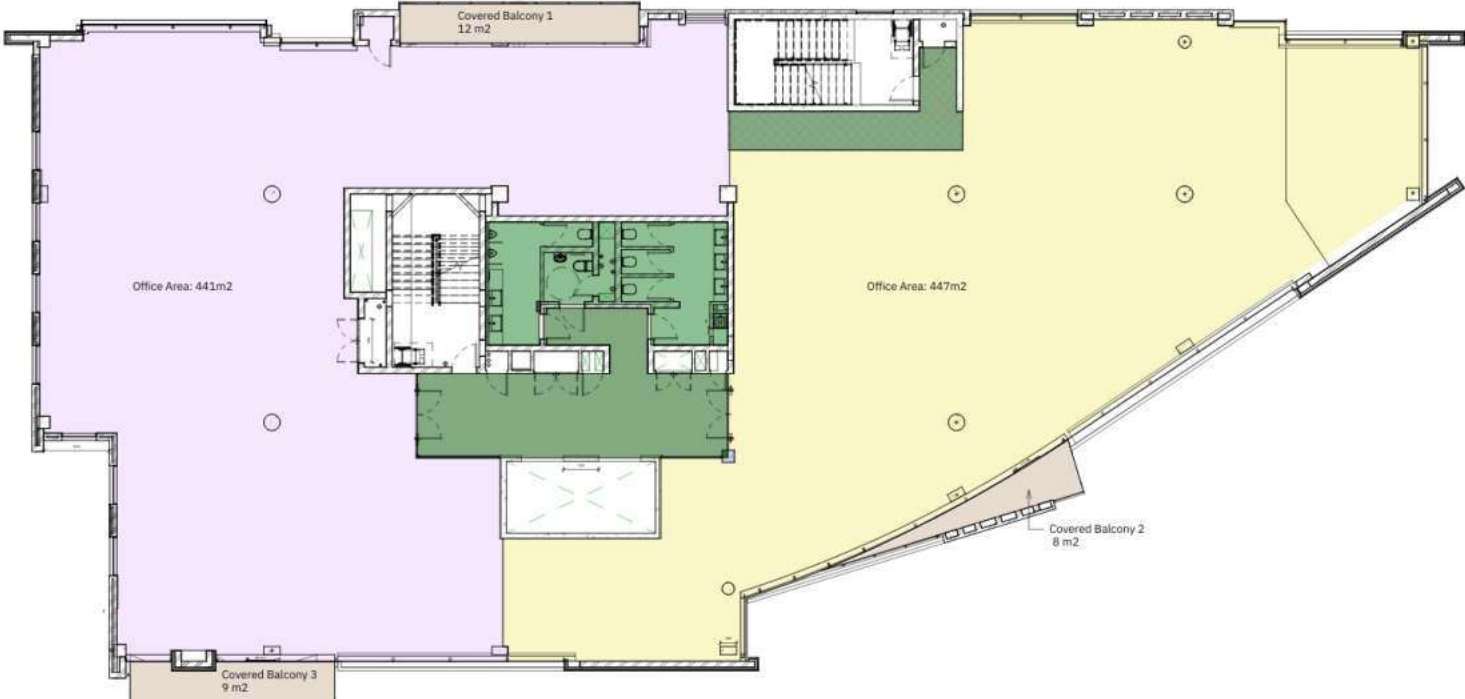
FLOORPLANS

GROUND FLOOR



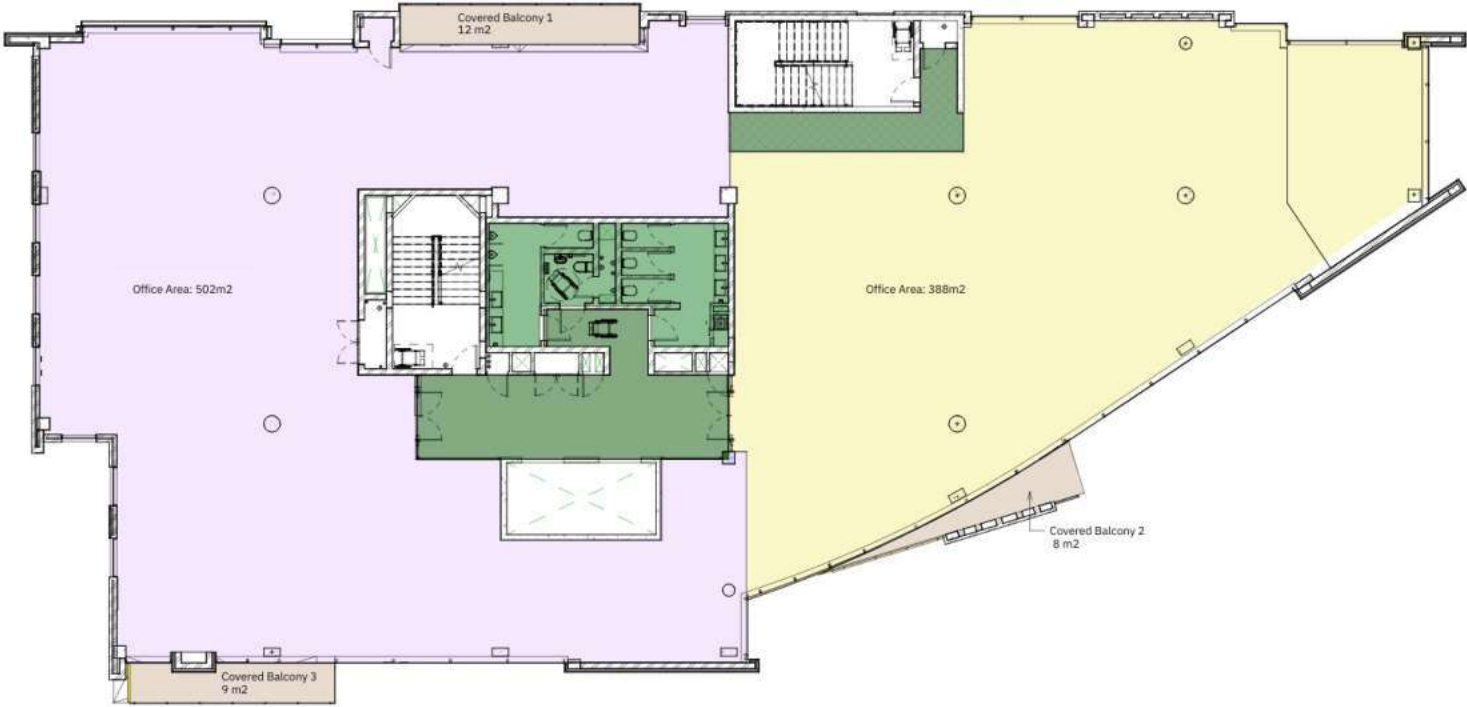
FLOORPLANS

FIRST FLOOR



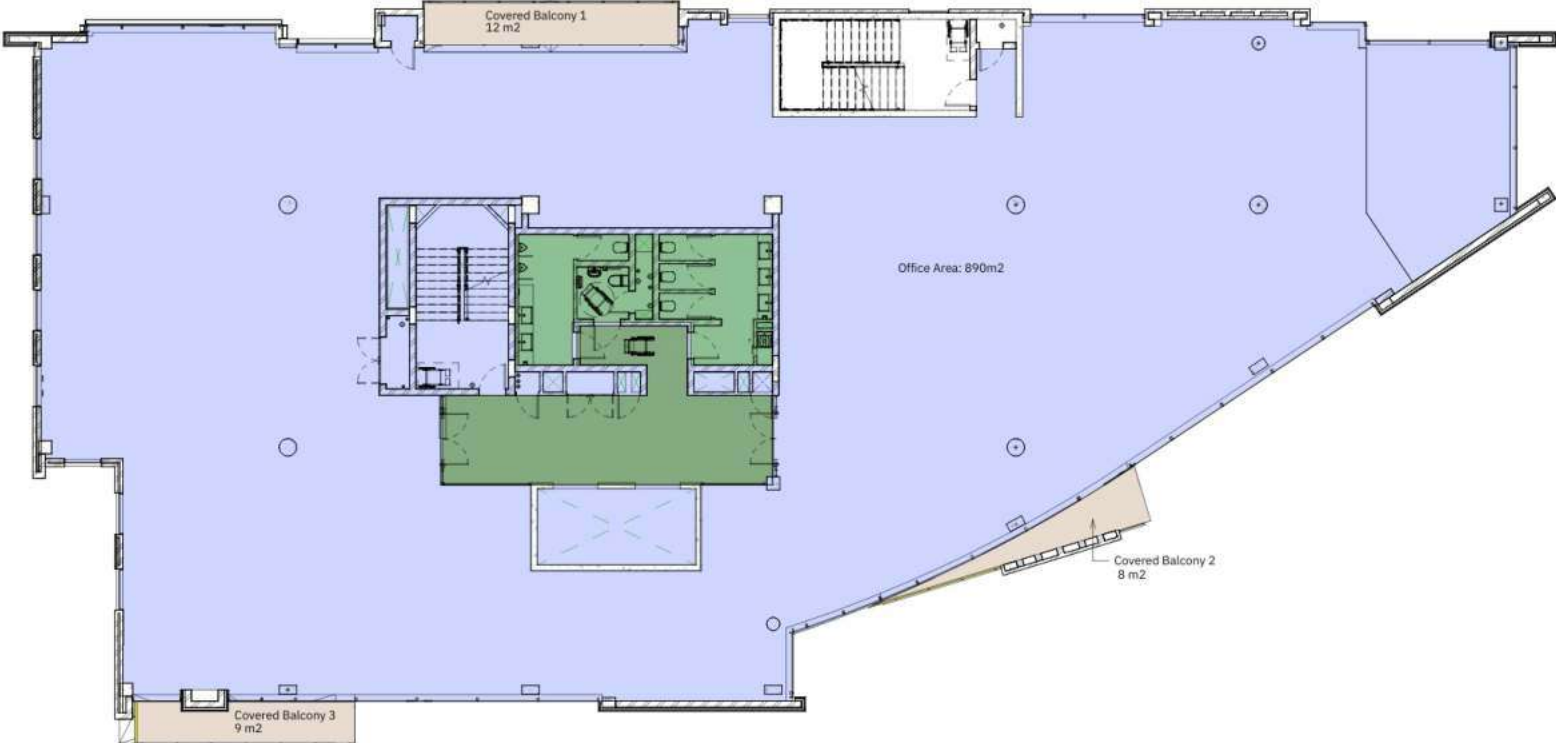
FLOORPLANS

SECOND FLOOR



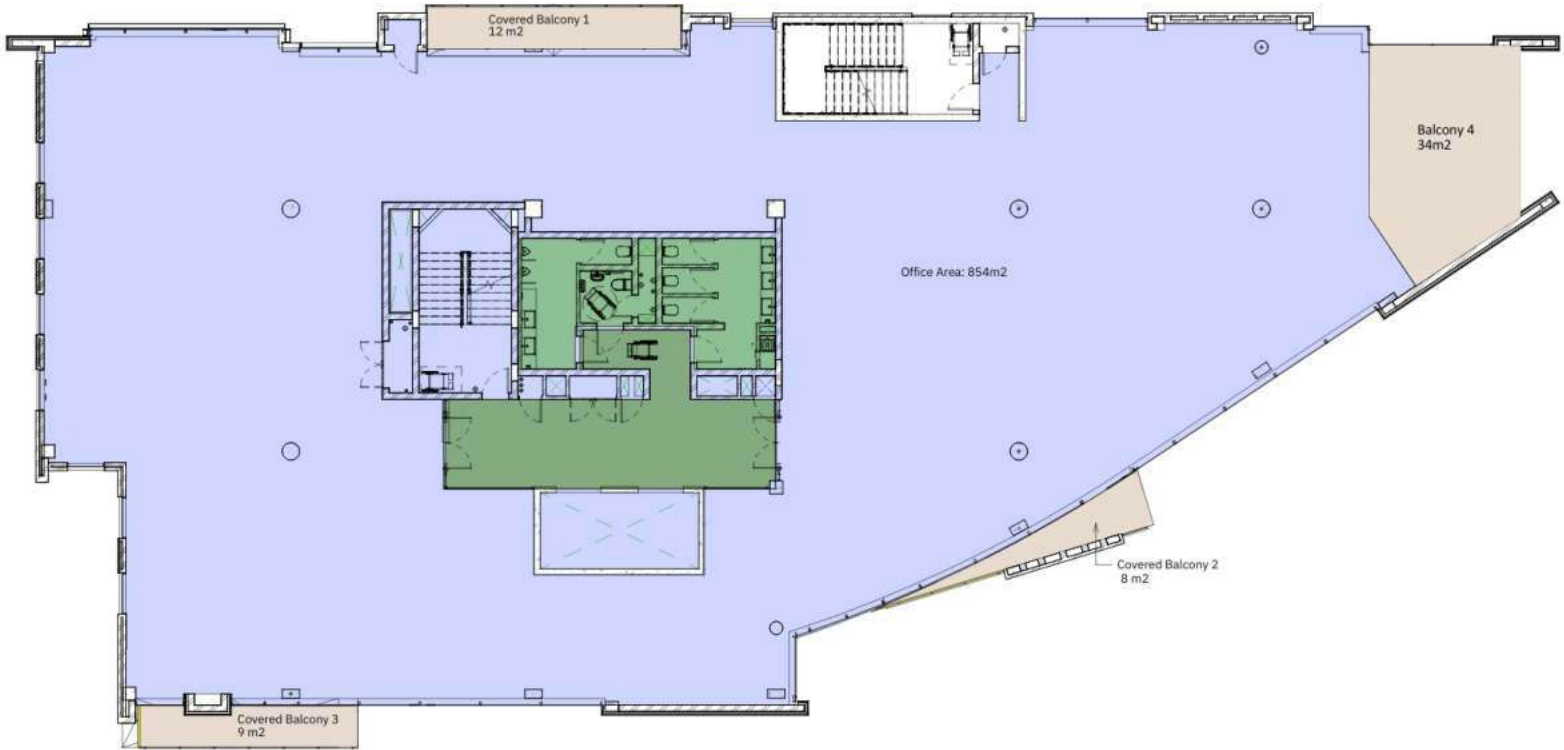
FLOORPLANS

THIRD FLOOR



FLOORPLANS

FOURTH FLOOR



8 PARKS BOULEVARD AREA SCHEDULE

FLOORS	OFFICE GROSS LETTABLE AREA	BALCONIES	AVAILABILITY
Ground	189m ² + 206m ²	173m ² + 207m ²	LET
First	441m ² + 447m ²	29m ²	LET
Second	502m ² + 388m ²	29m ²	LET
Third	890m ²	29m ²	LET
Fourth	854m ²	63m ²	LET
TOTALS	3,917m²	530m²	

COMPLETED & CURRENT DEVELOPMENTS



6 Parks Blvd | Feb 2020
IHS Towers, Sony Music, Sony Publishing,
and JLL



4 Parks Blvd | Aug 2021
Radisson RED Hotel



8 Parks Blvd | Oct 2020
Metier Private Equity, G+D Currency
Technology, Instinctif Partners, Anglo American
LWD, Zurich, and JLL



203 Oxford | Jan 2021
Life Healthcare HQ



7 Parks Blvd | Mar 2022
Anglo American Global Shared Services



5 Parks Blvd | Sep 2023
Boston Consulting Group, Edelman, Heidrick
and Struggles, Resilea, PPC, Arup, Skin Renewal,
and Intaprop



199 Oxford | Dec 2018
BP Southern Africa, Enaex Africa, Allied Gold,
Bluerock Atlantis, and Credo Wealth



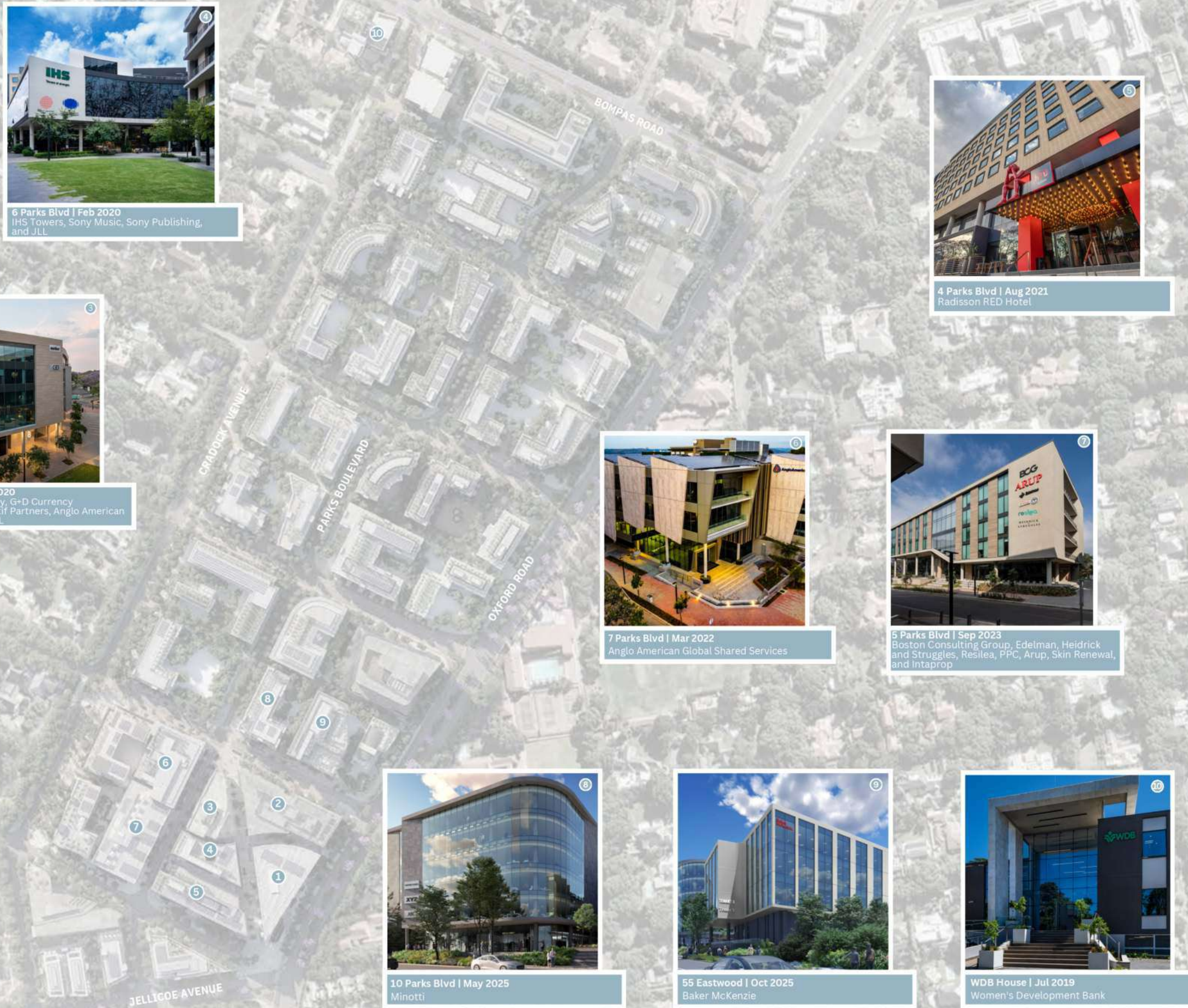
10 Parks Blvd | May 2025
Minotti



55 Eastwood | Oct 2025
Baker McKenzie



WDB House | Jul 2019
Women's Development Bank



Commercial Tenants



Retail
Tenants

Minotti
JOHANNESBURG

Qbar
by QUOIN ROCK

DOUBLESHOT
— coffee&tea —

Qsushi
by QUOIN ROCK

le fleur
CAFÉ

SKIN**renewal**

LIVY'S

THE POT
— LUCK CLUB

GIN-EATERY
011

SHORTMARKET
THE CLUB
88 SHORTMARKET STREET

OBSCURA

Ethos

AFRICA
PADEL

MM
&
OPTICAL

ASGB

ZEDMEN

LEVINGERS
DRY CLEAN & SHOE CLINIC

joyJOZI

Joy Jozi

PRECINCT AMENITIES



Oxford Parks continues the concept of Life Connected. It is integrated and central with clean, safe and secure privately managed public spaces. Everything within the development is at a human scale and walkable with ample tree-lined roads and cycle lanes. The lifestyle focused concept includes precinct convenience through many bespoke retail outlets and access to a broad selection of amenities - all within an easy 8 minute walk from the development. Some key amenities include:

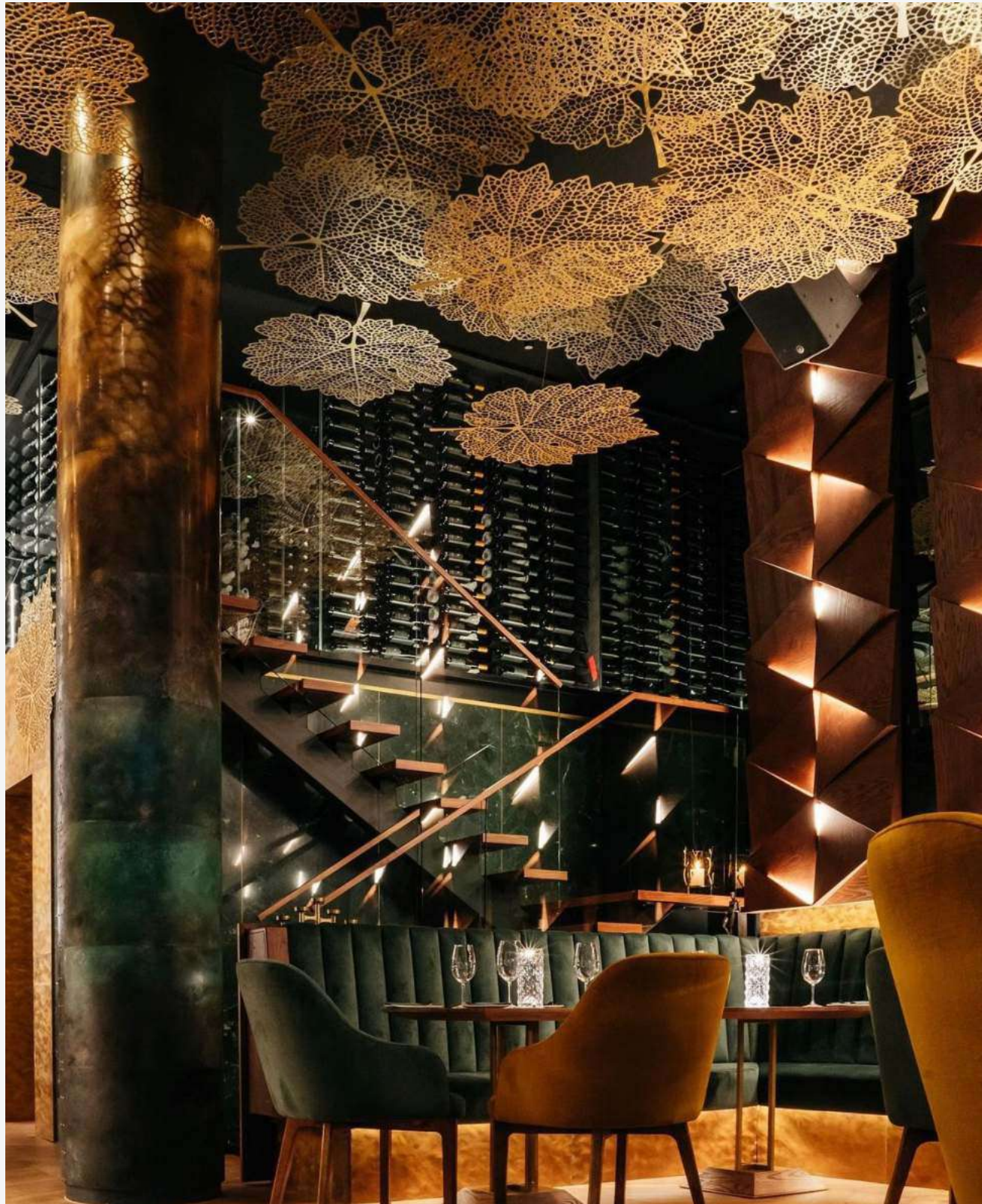
- | | | |
|---|--|---|
| <ul style="list-style-type: none"> 1 Rosebank Retail 2 Rosebank Gautrain Station 3 Gautrain Bus Stop 4 Illovo Junction 5 Grate Café 6 Minotti 7 Boutique Guesthouse (58 on Hume) 8 Radisson RED | <ul style="list-style-type: none"> 9 Restaurants and Services: <ul style="list-style-type: none"> • Shortmarket Club • The Potluck Club • Qbar by Quoin Rock • Qsushi by Quoin Rock • Le Fleur • 011 Rosebank • Obscura • Ethos • BGR • Zedmen • M&M Optical • Levingers • Doubleshot | <ul style="list-style-type: none"> 10 Restaurants and Facilities <ul style="list-style-type: none"> • Livy's Restaurant • Africa Padel 11 Joy Jozi ● Commercial Offices |
|---|--|---|



OXFORD PARKS IMMEDIATE AMENITIES

- Hotel
- Conferencing and meeting facilities
- Restaurants, coffee shop, services
- Bespoke event venues
- Park-like environment
- Safe pedestrian movement
- Secure public parking







OXFORD PARKS AMENITIES WITHIN A 1KM RADIUS

- Public transport includes taxis, buses and airport links
- Rosebank shopping hub
- Medical facilities
- Retail banks
- Schools and other educational institutes
- Conferencing facilities and auditorium
- Sport and health clubs
- Golf courses
- Places of worship
- Art galleries
- Parks and recreational public spaces
- An array of restaurants and speciality eateries

IHS

Towers of strength



SONY MUSIC



SONY MUSIC
JAPAN

CONTACT

Tel: 011 731 1900
E-mail: info@intaprop.co.za

Web: www.intaprop.co.za
Physical address: Intaprop, Ground Floor,
5 Parks Boulevard, Oxford Parks, Dunkeld

Proudly Developed by:

INTAPROP

PROPERTY DEVELOPMENT
AND INVESTMENT

LIFE CONNECTED

**OXFORD
PARKS**

www.oxfordparks.co.za