



5 PARKS
BOULEVARD

OXFORD
PARKS



CONTENTS

- INTRODUCTION
- PERFECTLY LOCATED
- WELL CONNECTED
- PRECINCT CONCEPT
- ESG PRINCIPLES
- 5 PARKS BOULEVARD DEVELOPMENT
- BUILDING IMAGES
- FLOOR PLANS
- COMPLETED & CURRENT DEVELOPMENTS
- CURRENT TENANTS
- PRECINCT AMENITIES
- CONTACT

OXFORD PARKS

OXFORD PARKS, AN EXTENSION OF THE ESTABLISHED MATURE ROSEBANK NODE, IS A **VIBRANT MIXED-USE PRECINCT** COMPRISING OFFICES, BESPOKE RETAIL AND AN ARRAY OF RESIDENTIAL DEVELOPMENTS AND HOTELS. THE EMPHASIS IS ON A **HIGH QUALITY PUBLIC ENVIRONMENT**, PAIRED WITH PEDESTRIAN LEVEL RETAIL ACTIVITY WHICH ALLOWS OXFORD PARKS TO EMBODY A **DYNAMIC HIGH-STREET CULTURE**. GENEROUS SETBACKS FORM WIDE **LANDSCAPED** PAVEMENTS ACCOMMODATING PEDESTRIAN **PATHS, CYCLE LANES, PIAZZAS & LINEAR PARKS**. THESE LANDSCAPED AREAS PROMOTE THE USE OF THE PUBLIC REALM & PROVIDE SPACES FOR **ART & ENTERTAINMENT LED INSTALLATIONS** & ACTIVITIES. OXFORD PARKS FOCUSES ON THE DEVELOPMENT OF STATE OF THE ART, EFFICIENT, **GREEN STAR RATED** BUILDINGS AS WELL AS PUBLIC AREAS. OXFORD PARKS, BEING A **PRIVATELY MANAGED** PRECINCT, WILL FACILITATE THE SECURITY, LANDSCAPING & SERVICE DELIVERY TO PUBLIC AREAS ENSURING SEAMLESS OPERATIONS WITHIN THE PRECINCT. OXFORD PARKS, COMPLIMENTED BY **ESTABLISHED & COSMOPOLITAN ROSEBANK** IS FAST SECURING ITS IDENTITY IN THE CITY. OXFORD PARKS TRULY EXEMPLIFIES THE CONNECTIVITY OF **BUSINESS, LIFE & LEISURE**. 5 PARKS BOULEVARD WILL BE NO EXCEPTION TO THE HIGH QUALITY DEVELOPMENT FINISH THAT OXFORD PARKS PRIDES ITSELF ON.



meier



8

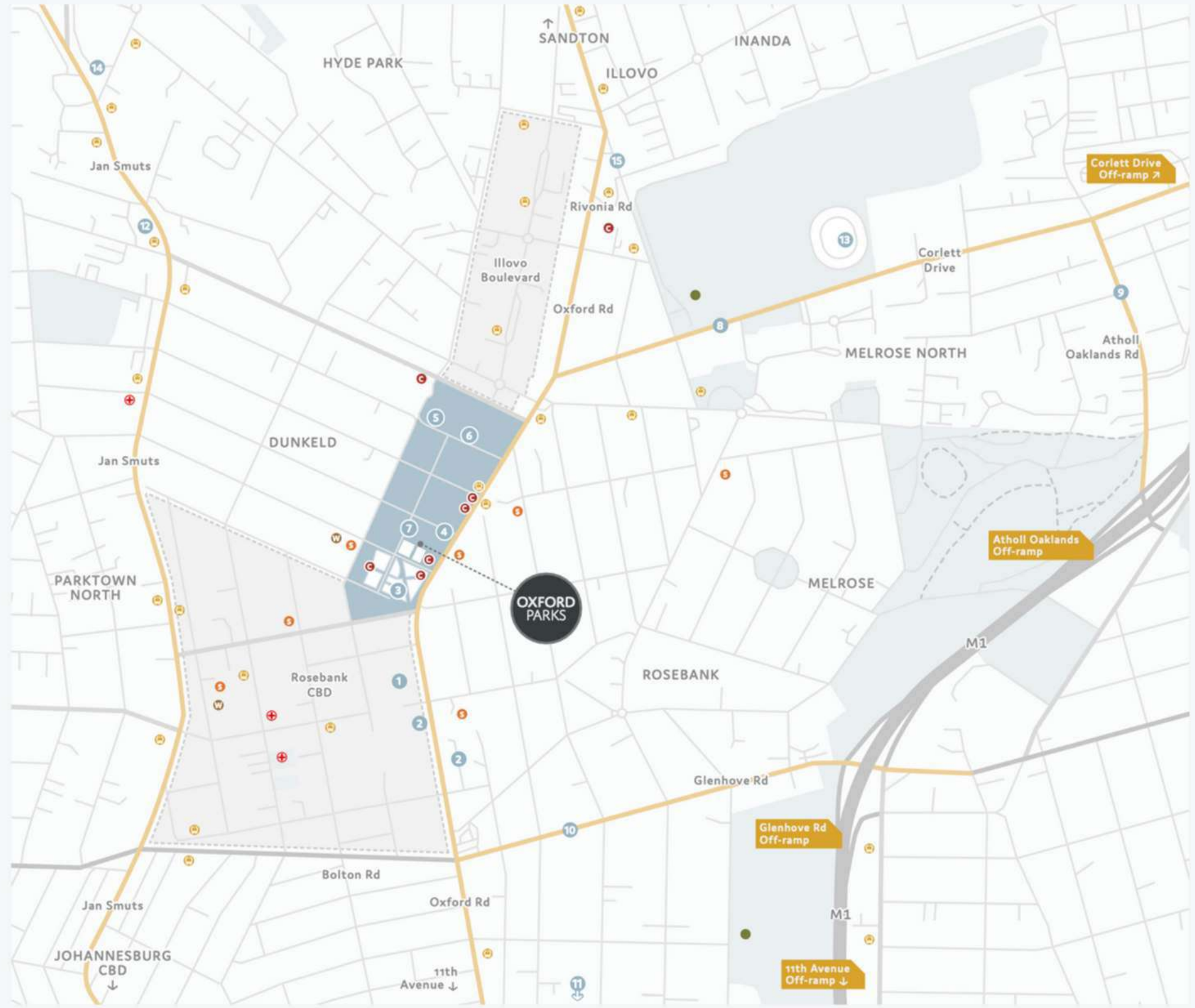
8

PERFECTLY LOCATED

Points of interest:

- 4 Highway access points
- High intersection density and smaller more efficient grids
- Proximity to Rosebank Gautrain station and bus system
- Variety of excellent public transport
- Walk-ability
- Road and infrastructure upgrades
- Engineering services agreement
- New Parks Boulevard

- | | | |
|---------------------------------|---------------------------------|-------------------|
| Oxford Parks Precinct | Illovo Boulevard & Rosebank CBD | Green Belts |
| Gautrain Bus Stops | Golf Courses | Places of Worship |
| Schools | Hospitals | |
| Commercial Offices | | |
| 1 Rosebank Retail | 9 Athol Oaklands Road | |
| 2 Rosebank Gautrain station | 10 Glenhove Road | |
| 3 Radisson RED | 11 11th Avenue | |
| 4 Planned Commercial HQ | 12 Dunkeld West Shopping Centre | |
| 5 The Village | 13 Wanderers Stadium | |
| 6 Villoresi Office Park | 14 Hyde Park Shopping Centre | |
| 7 Planned express grocery store | 15 Thrupps Illovo Centre | |
| 8 Corlett Drive | | |





WELL CONNECTED

The Oxford Parks precinct is an energetic and responsive urban destination designed to facilitate a seamless connection between life, leisure and business. The primary choice to locate and invest; a place where people succeed and enjoy life.

5 Parks Boulevard is conveniently situated within this connective focal area. Close to core business, leisure and transport hubs in Johannesburg.

- GAUTRAIN STATION**
This station links Rosebank and surrounds to Soweto, Pretoria and OR Tambo

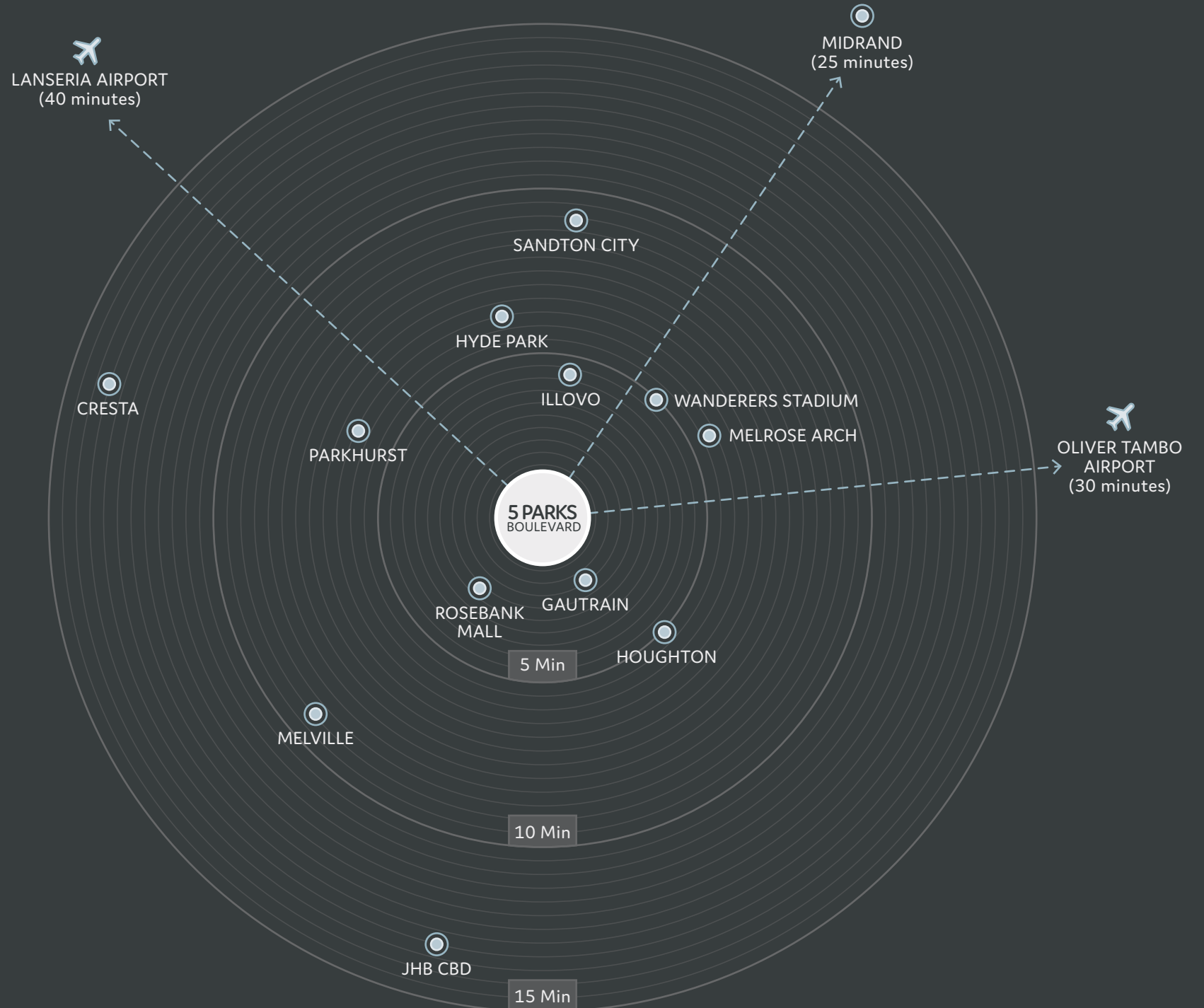
5 Minutes
- ROSEBANK MALL**
Houses over 200 shops and restaurants

5 Minutes
- ILLOVO**
A well established residential area and a growing office node

5 Minutes
- SANDTON CITY**
One of the largest shopping malls in Africa

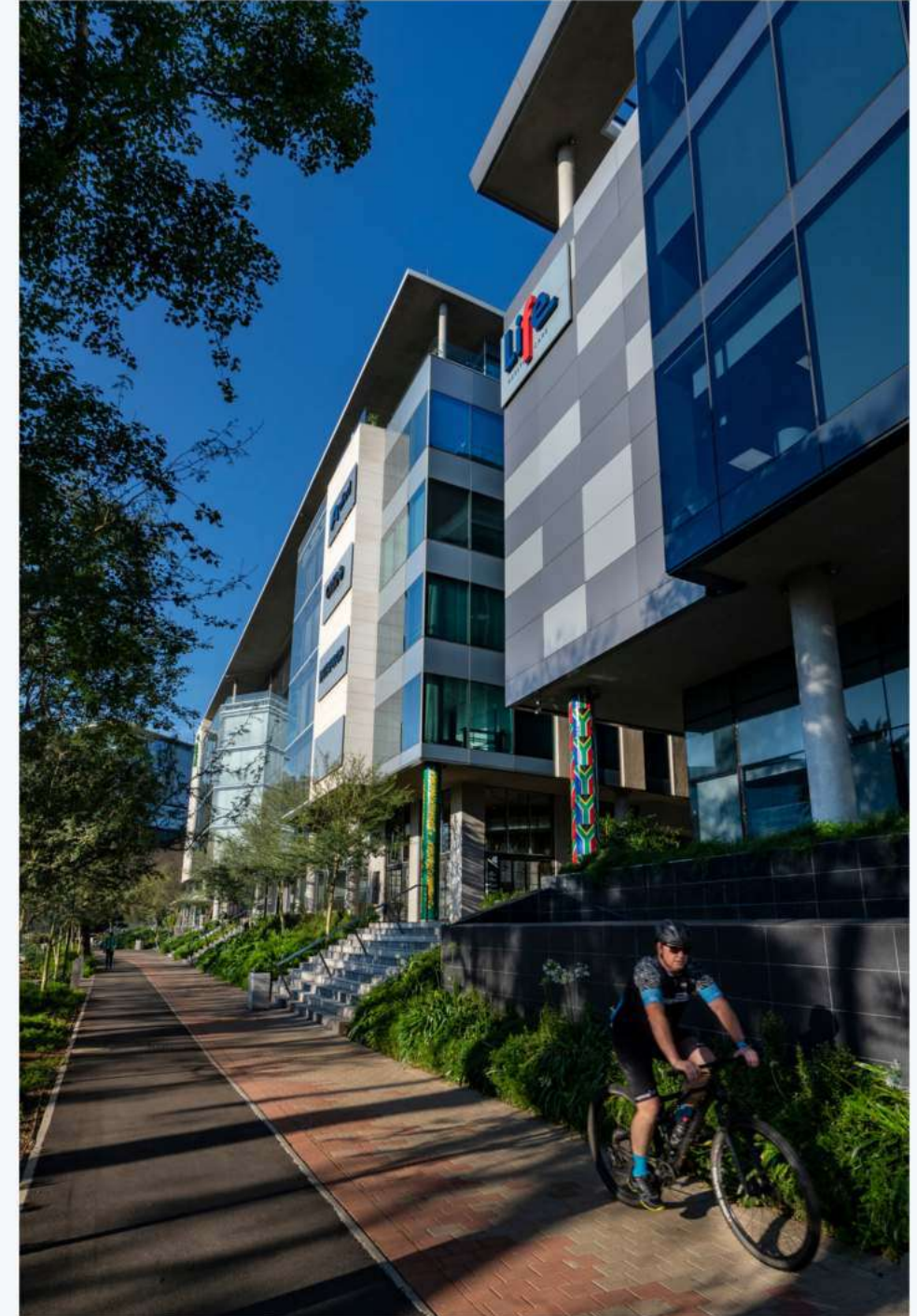
9 Minutes
- OLIVER TAMBO AIRPORT**
International airport

30 Minutes

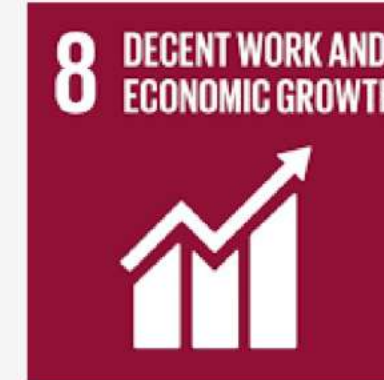


PRECINCT CONCEPT

- Mixed-use precinct
- Extension of Rosebank
- Established mature node
- Epicenter of Johannesburg
- Privately managed precinct
- Precinct management of security, cleaning and public services
- Lifestyle focused
- Precinct convenience & bespoke retail
- Retail service-related amenities
- Human scale development
- Dynamic high-street culture
- Tree-lined piazzas and linear parks
- Pedestrian focused public environment
- Cycle lanes
- Connectivity



ESG PRINCIPLES



THE 5 PARKS BOULEVARD DEVELOPMENT

Visually, this sophisticated building creates a powerful impact with its flush glazed and stone clad facade. Positioned on the exclusive Parks Boulevard address road, this building is a showcase within the Precinct and allows for majestic views across Johannesburg's urban forest. Balconies and outdoor spaces will be available on select floors and larger outdoor gatherings can be accommodated on the rooftop entertainment area that will be available to all tenants. Secure basement parking creates ease of access into the building, where a triple lift bank will conveniently carry passengers directly to their required floor level. Upon entry into the office floors, users are greeted with natural light, generous floor to soffit height and exceptional base build finishes. This modern building encompasses architectural flare, green building efficiencies and adaptability.



Aerial view of the Oxford Parks precinct with Sandton in the distance.





BCG
ARUP

→ **Edelman**



renewal

OXFORD
PARK



BIG
AROP
↓
MCC

5 UNIT
5 UNIT

STOP



5 PARKS
BOULEVARD



BCG
ARUP

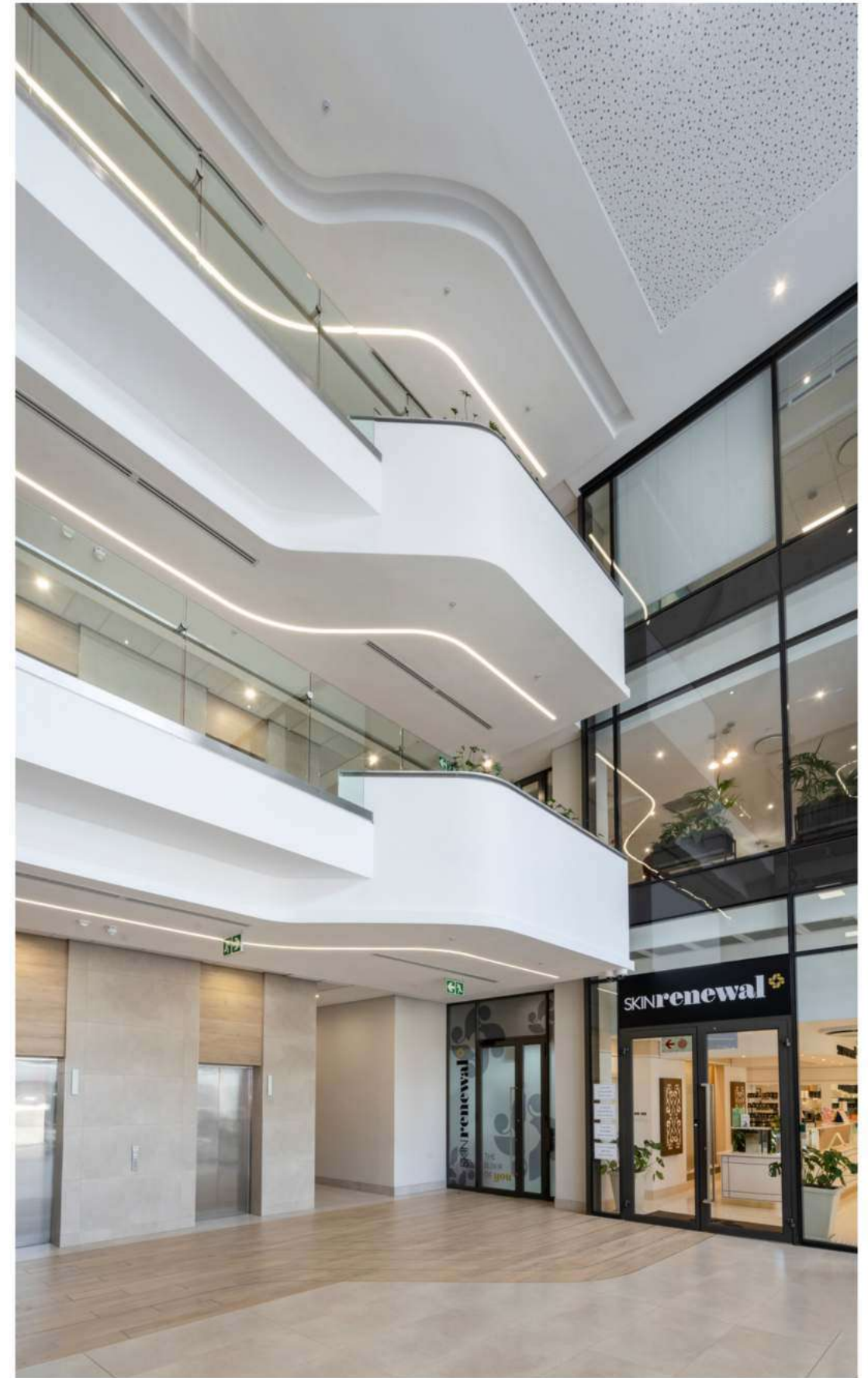
Edelman



OXFORD
PARKS

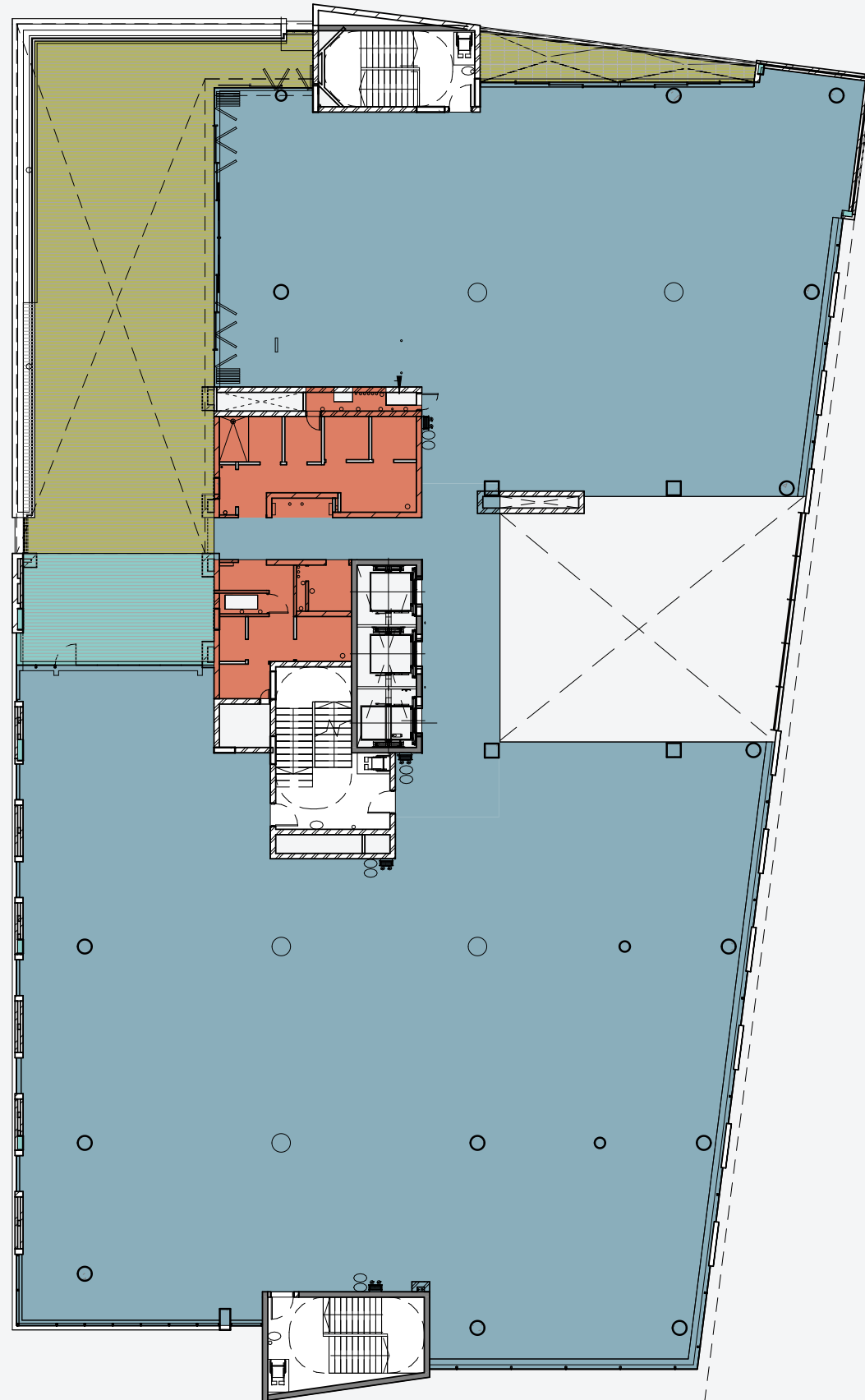






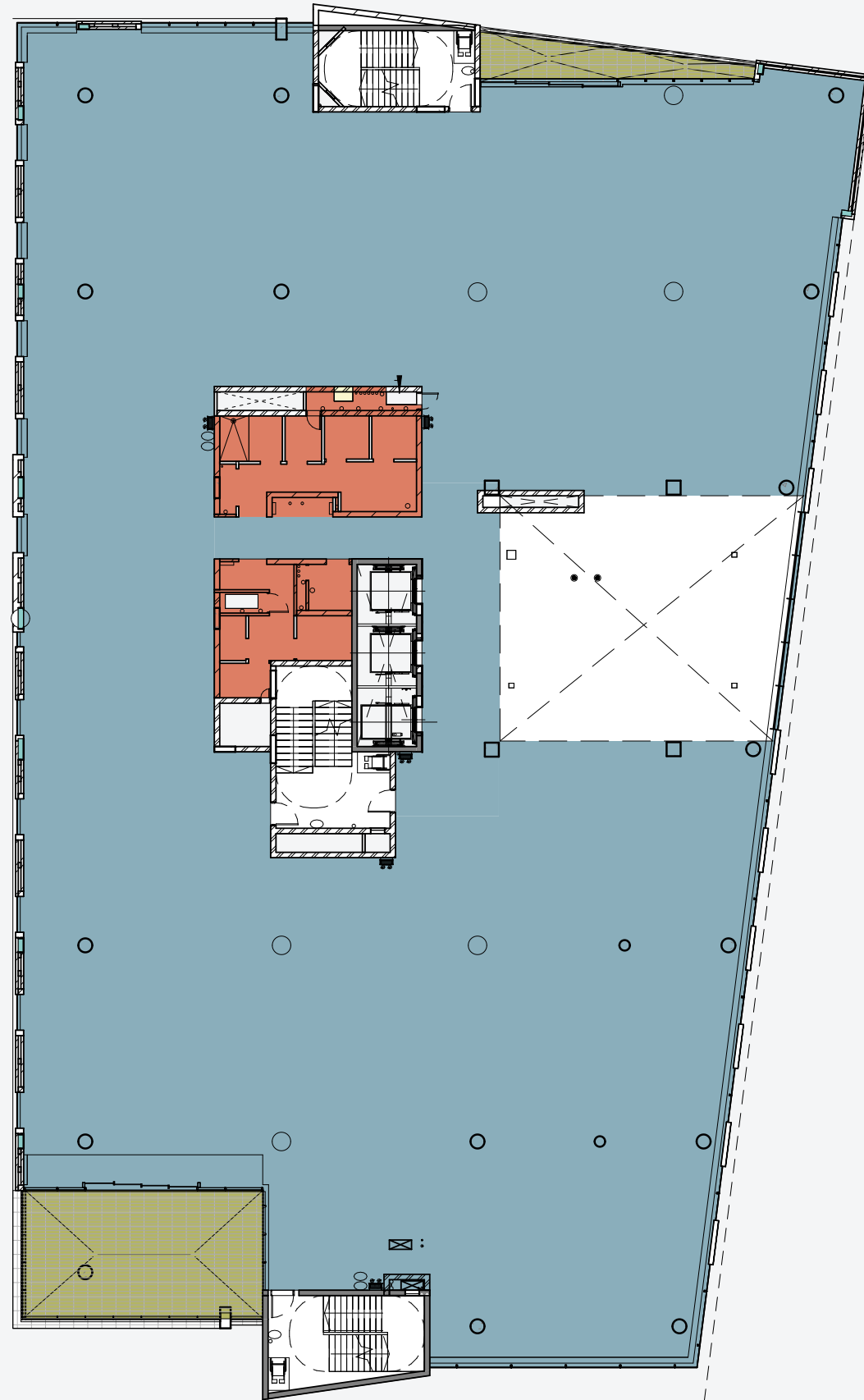
FLOORPLANS

OFFICE LEVEL 4



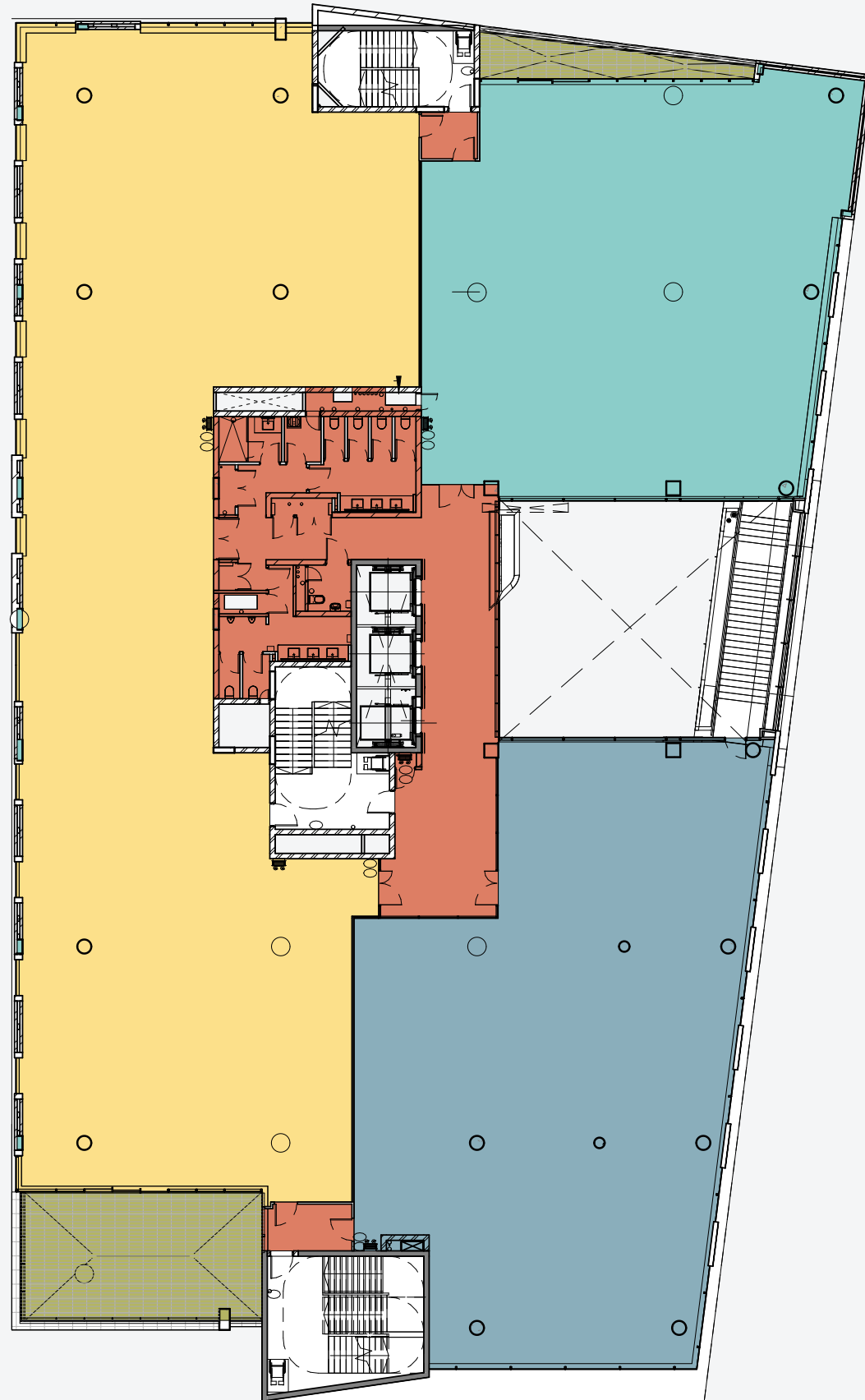
FLOORPLANS

OFFICE LEVEL 3



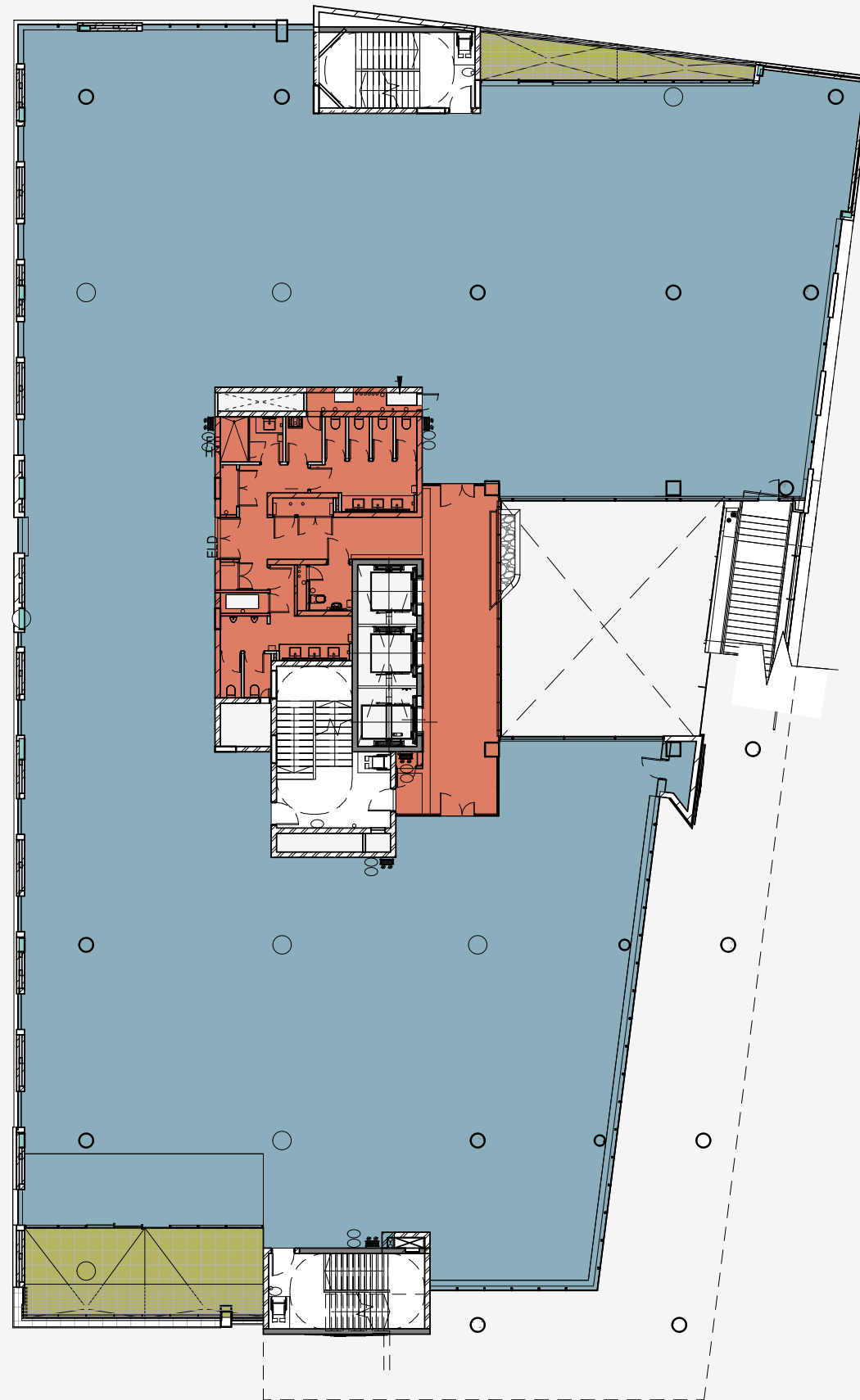
FLOORPLANS

OFFICE LEVEL 2



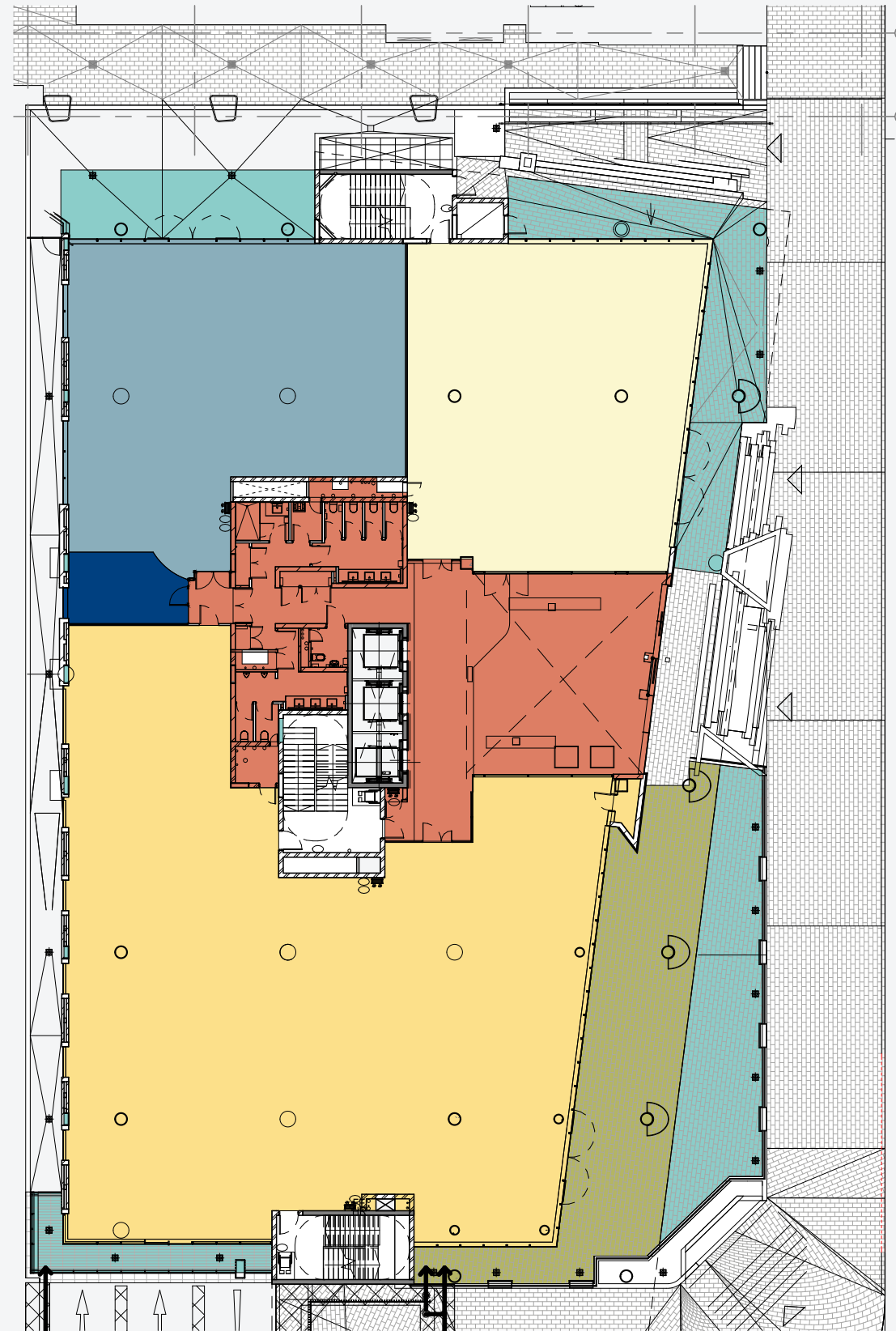
FLOORPLANS

OFFICE LEVEL 1



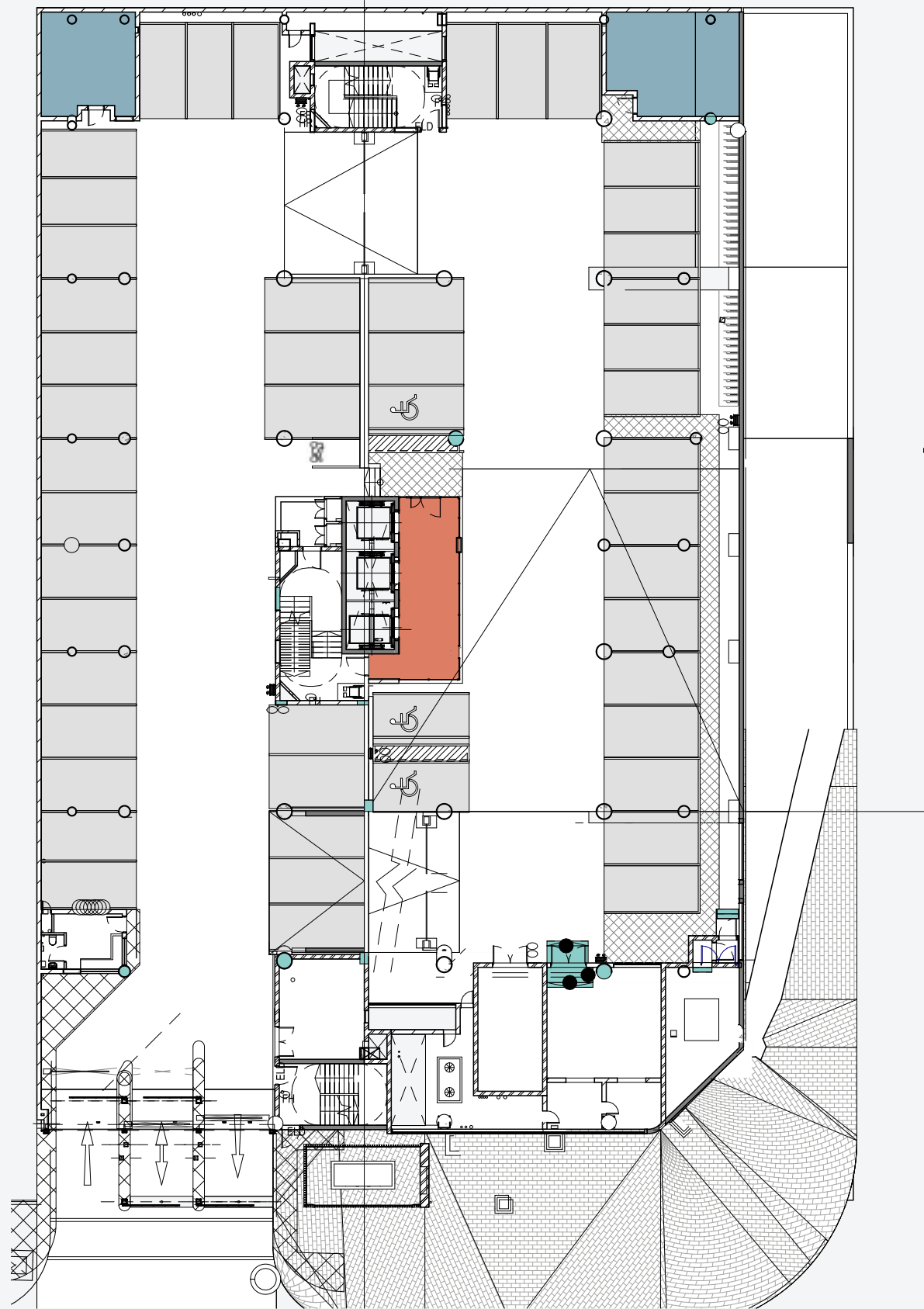
FLOORPLANS

GROUND FLOOR



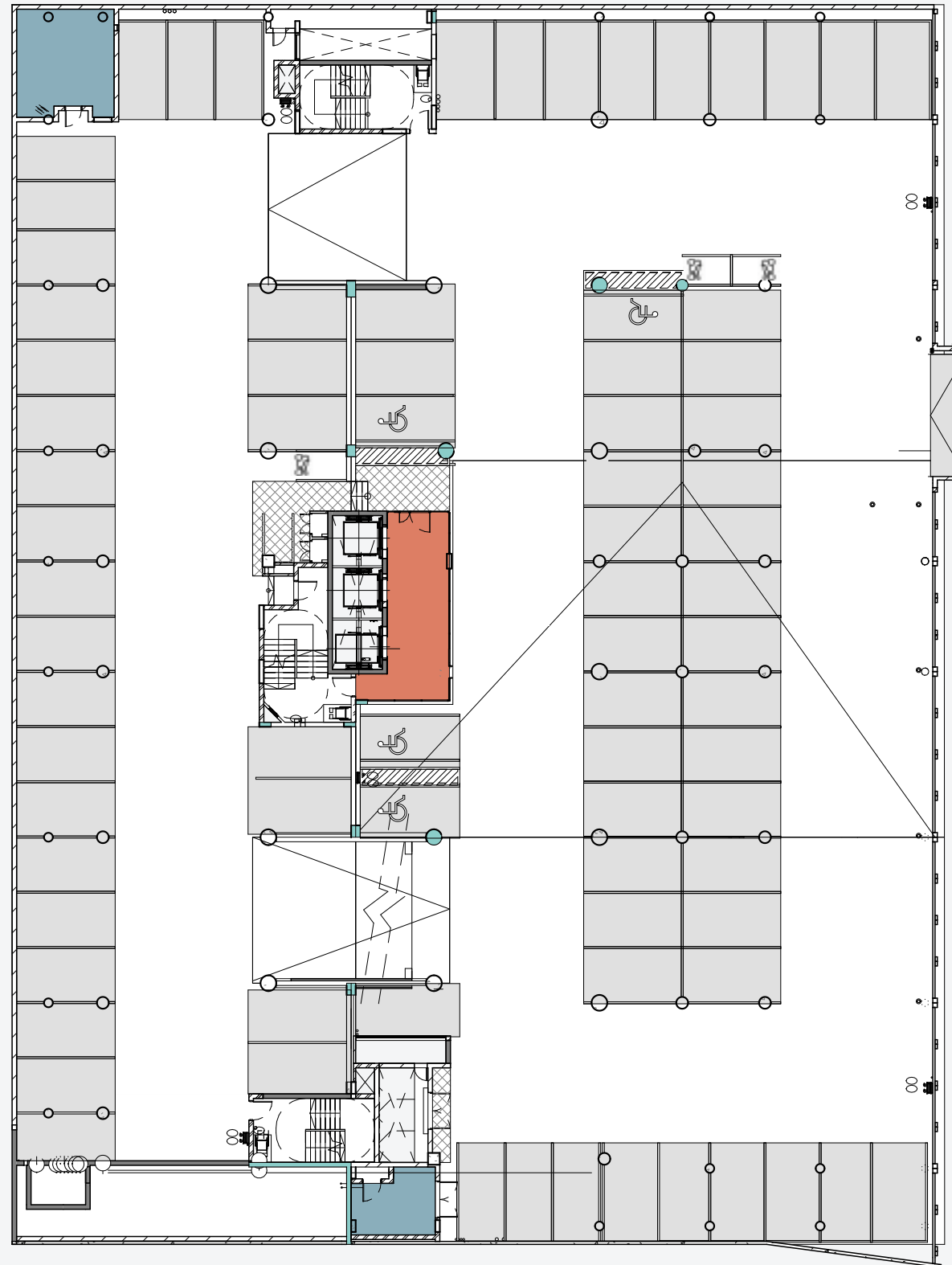
FLOORPLANS

BASEMENT 1



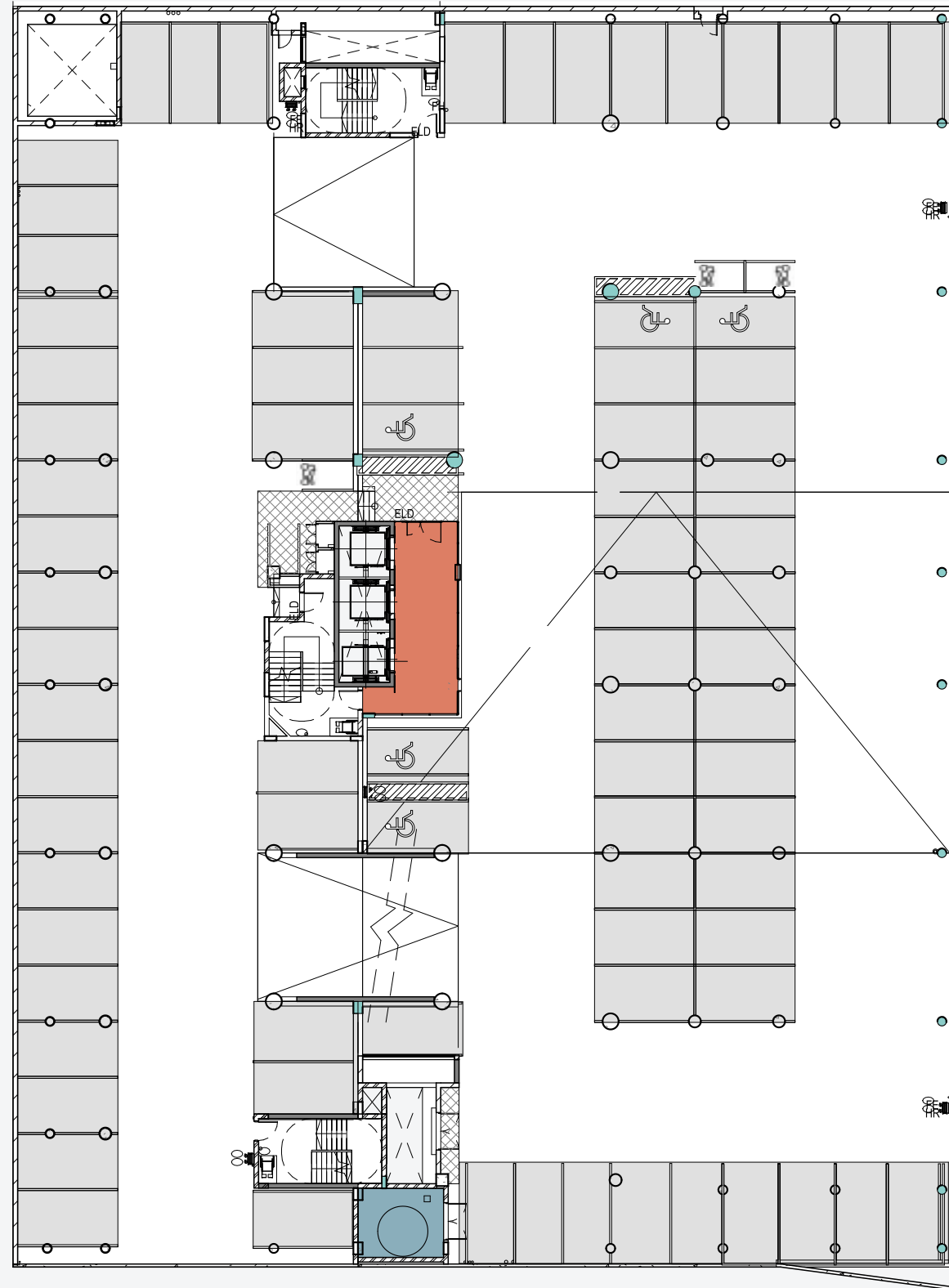
FLOORPLANS

BASEMENT 2



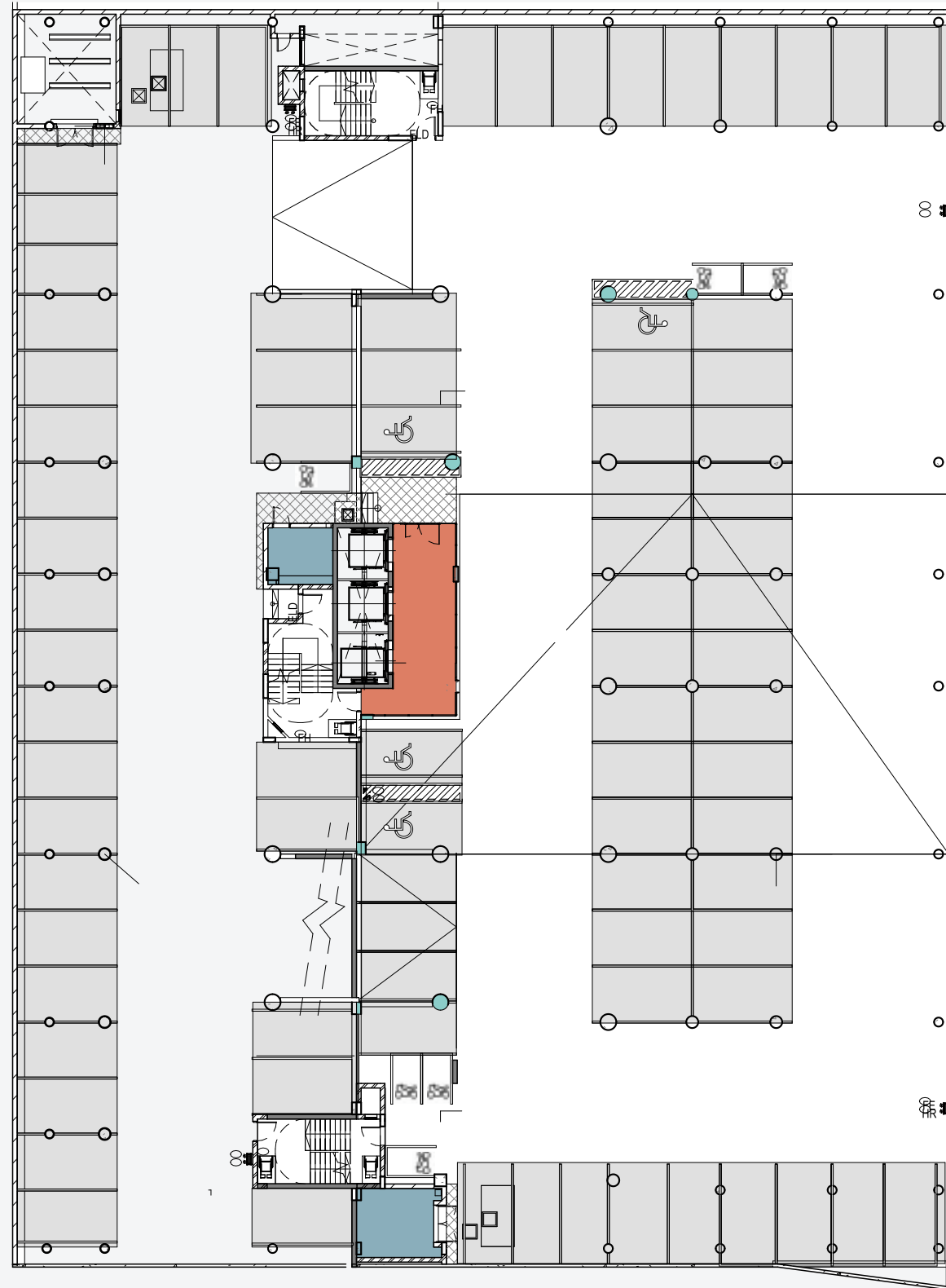
FLOORPLANS

BASEMENT 3



FLOORPLANS

BASEMENT 4



5 PARKS BOULEVARD AREA SCHEDULE

FLOORS	OFFICE GROSS LETTABLE AREA	COMMON AREA	USABLE AREA	TERRACE AREA
Floor 4	1320	72	1248	240
Floor 3	1625	72	1553	72
Floor 2	1494	172	1322	72
Floor 1	1363	137	1226	57
Ground Floor	1371	242	1129	356
Basement 1	33			
Basement 2	33			
Basement 3	33			
Basement 4	34			
TOTALS	7306	695	6478	797

COMPLETED & CURRENT DEVELOPMENTS



6 Parks Blvd | Feb 2020
IHS Towers, Sony Music, Sony Publishing,
and JLL



4 Parks Blvd | Aug 2021
Radisson RED Hotel



8 Parks Blvd | Oct 2020
Metier Private Equity, G+D Currency
Technology, Instinctif Partners, Anglo American
LWD, Zurich, and JLL



203 Oxford | Jan 2021
Life Healthcare HQ



7 Parks Blvd | Mar 2022
Anglo American Global Shared Services



5 Parks Blvd | Sep 2023
Boston Consulting Group, Edelman, Heidrick
and Struggles, Resilea, PPC, Arup, Skin Renewal,
and Intaprop



199 Oxford | Dec 2018
BP Southern Africa, Enaex Africa, Allied Gold,
Bluerock Atlantis, and Credo Wealth



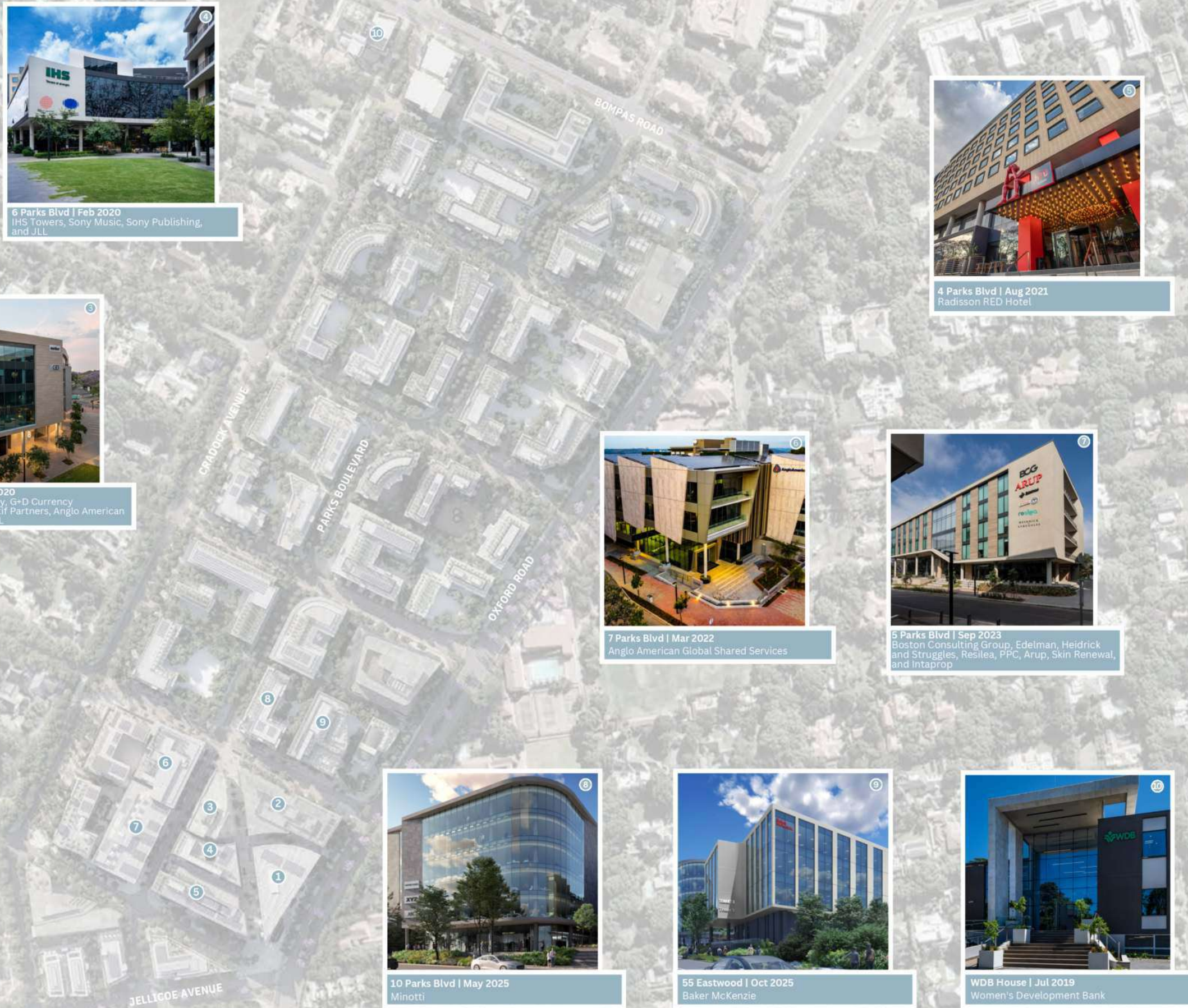
10 Parks Blvd | May 2025
Minotti



55 Eastwood | Oct 2025
Baker McKenzie



WDB House | Jul 2019
Women's Development Bank



Commercial Tenants



Retail
Tenants

Minotti
JOHANNESBURG

Qbar
by QUOIN ROCK

DOUBLESHOT
— coffee&tea —

Qsushi
by QUOIN ROCK

le fleur
CAFÉ

SKIN**renewal**

LIVY'S

THE POT
— LUCK CLUB

GIN-EATERY
011

SHORTMARKET
THE CLUB
88 SHORTMARKET STREET

OBSCURA

Ethos

AFRICA
PADEL

MM
&
OPTICAL

ASGB

ZEDMEN

LEVINGERS
DRY CLEAN & SHOE CLINIC

joyJOZI

Joy Jozi

PRECINCT AMENITIES



Oxford Parks continues the concept of Life Connected. It is integrated and central with clean, safe and secure privately managed public spaces. Everything within the development is at a human scale and walkable with ample tree-lined roads and cycle lanes. The lifestyle focused concept includes precinct convenience through many bespoke retail outlets and access to a broad selection of amenities - all within an easy 8 minute walk from the development. Some key amenities include:

- | | | |
|---|--|---|
| <ul style="list-style-type: none"> 1 Rosebank Retail 2 Rosebank Gautrain Station 3 Gautrain Bus Stop 4 Illovo Junction 5 Grate Café 6 Minotti 7 Boutique Guesthouse (58 on Hume) 8 Radisson RED | <ul style="list-style-type: none"> 9 Restaurants and Services: <ul style="list-style-type: none"> • Shortmarket Club • The Potluck Club • Qbar by Quoin Rock • Qsushi by Quoin Rock • Le Fleur • 011 Rosebank • Obscura • Ethos • BGR • Zedmen • M&M Optical • Levingers • Doubleshot | <ul style="list-style-type: none"> 10 Restaurants and Facilities <ul style="list-style-type: none"> • Livy's Restaurant • Africa Padel 11 Joy Jozi ● Commercial Offices |
|---|--|---|



OXFORD PARKS IMMEDIATE AMENITIES

- Hotel
- Conferencing and meeting facilities
- Restaurants, coffee shop, services
- Bespoke event venues
- Park-like environment
- Safe pedestrian movement
- Secure public parking







OXFORD PARKS AMENITIES WITHIN A 1KM RADIUS

- Public transport includes taxis, buses and airport links
- Rosebank shopping hub
- Medical facilities
- Retail banks
- Schools and other educational institutes
- Conferencing facilities and auditorium
- Sport and health clubs
- Golf courses
- Places of worship
- Art galleries
- Parks and recreational public spaces
- An array of restaurants and speciality eateries

IHS
Towers of strength



SONY MUSIC



SONY MUSIC
SINGAPORE

CONTACT

Tel: 011 731 1900
E-mail: info@intaprop.co.za

Web: www.intaprop.co.za
Physical address: Intaprop, Ground Floor,
5 Parks Boulevard, Oxford Parks, Dunkeld

Proudly Developed by:

INTAPROP

PROPERTY DEVELOPMENT
AND INVESTMENT



LIFE CONNECTED

**OXFORD
PARKS**

www.oxfordparks.co.za